

# Frank Harris & Co.



## Cromwell Tower, EC2Y

£1,650,000

A lovely four bedroom (Type 1B) North and West facing apartment on the 24th floor, with views of the London Eye and beyond. The current owners have retained many of the original features including the Brooke Marine kitchen. Comprising briefly, four bedrooms, family bathroom, shower room, kitchen, utility room, and reception room with access to balcony/fire escape.





Cromwell Tower is the easternmost of the three high-rise tower blocks in the Barbican, situated at the junction of Whitecross Street and Beech Street (Chiswell Street), adjacent to the entrance of the Barbican Arts Centre and within walking distance of Whitecross Street (Waitrose) and Finsbury Pavement (Marks & Spencer). Daily rubbish collection, window-cleaning and background heating are included within the service charge, with rented parking available by separate negotiation. The Barbican Estate, which includes private gardens and lake, restaurants, tennis courts, library, art gallery, theatre, and three cinemas, is Grade II Listed.

Residents may enjoy the communal gardens, and the City of London, with its variety of entertainment venues, shopping facilities, and comprehensive transport links (including the new Cross Rail Stations at Farringdon and Liverpool Street) are within close proximity.

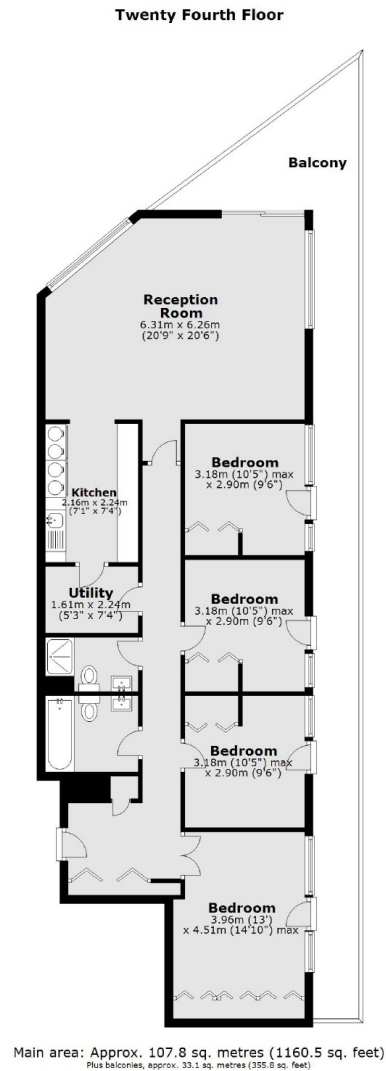
- 24th Floor • Four Bedrooms • 24 Hour Porterage •
- Views Of The London Eye • No Onward Chain • Extended Lease •







# Frank Harris & Co.



Frank Harris & Co. Barbican and City  
87 Long Lane, London,  
EC1A 9ET  
020 7600 7000  
citysales@frankharris.co.uk

Energy Rating: TBC. We aim to make our particulars both accurate and reliable. However they are not guaranteed; nor do they form part of an offer or contract. If you require clarification on any points then please contact us, especially if you're traveling some distance to view. Please note that appliances and heating systems have not been tested and therefore no warranties can be given as to their good working order.