



Glenister Park Road, SW16

£625,000

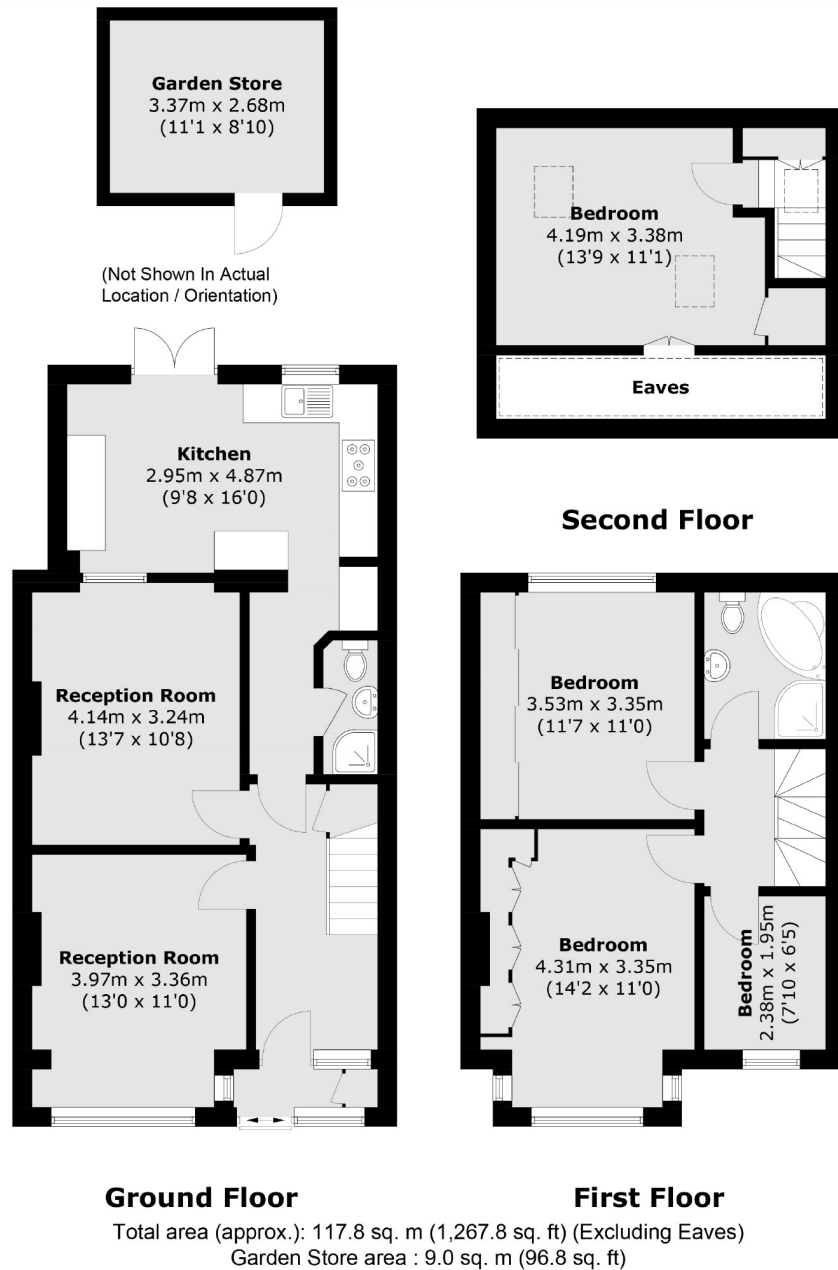
A four bedroom family home with a large landscaped garden located in Streatham Vale just moments from Streatham Common station and amenities.

- Four Bedroom House
- Streatham Common
- Landscaped Garden
- Close to Amenities
- Two reception Rooms
- Modernisation Potential



Hambro Road is situated in close proximity to a wealth of amenities in the area including numerous of independent pubs, coffee shops, and restaurants, several large supermarkets, leisure centre and the green spaces of Streatham Common. Residents have easy access to a number of transport links including the Thameslink via Streatham Mainline Station and Streatham Common offering quick links in to Victoria and London Bridge and a number of bus routes to Brixton (Victoria Line) and the City.





Jacksons Streatham
1-3 De Montfort Parade
Streatham High Road
Streatham
London
SW16 1BU

Energy Rating: D We aim to make our particulars both accurate and reliable. However they are not guaranteed; nor do they form part of an offer or contract. If you require clarification on any points then please contact us, especially if you're traveling some distance to view. Please note that appliances and heating systems have not been tested and therefore no warranties can be given as to their good working order.