

ROKSTONE

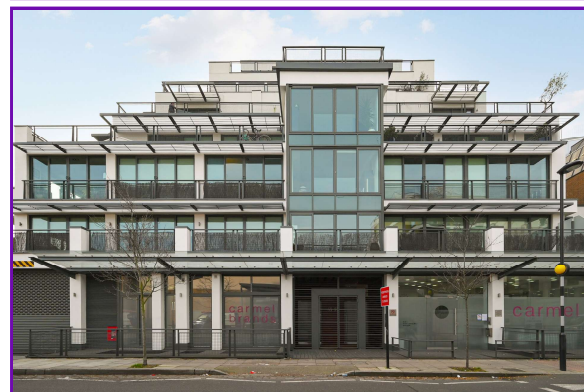
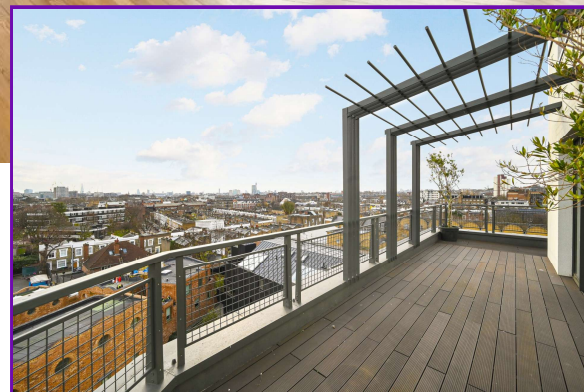


Holmes Road, Kentish Town, NW5

A stunning four bedroom new build Penthouse in Kentish Town with direct views over London's Sky line. This unique apartment has been finished to the highest standards comprising of four bedroom suites, an open plan kitchen and reception room and an impressive triple aspect terrace with views over London's sky line. The property boasts ceiling to floor windows allowing for an abundance of light throughout and further benefits from ample storage and underfloor heating.

The building is located on Holmes Road within walking distance to Kentish Town tube station. The property is within walking distance to Camden Town which has been regenerated over the past few years with a transformative face lift around Camden Market. Kentish Town and Camden have long been the heart of London's music scene, with venues such as the Forum Kentish Town and Roundhouse Camden being noteworthy destinations for music lovers.

Price £3,500 pw



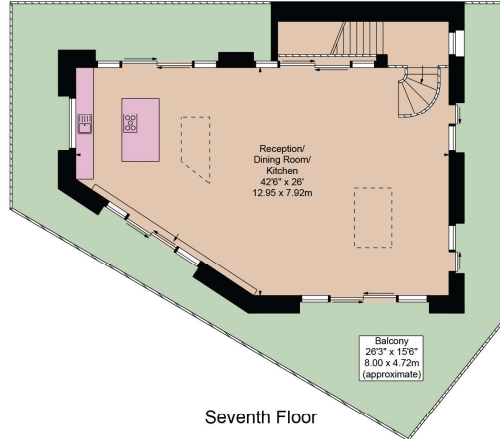
Olivia McSweeney | Head of Lettings
D: 020 3219 5679 | M: 07584633058 | E: olivia@rokstone.com
5 Dorset Street, London, W1U 6QJ

ROKSTONE

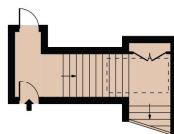
Holmes Road

Approx. Gross Internal Area 3320 Sq Ft - 308.44 Sq M

Approx. External Total Area 2283 Sq Ft - 212.10 Sq M
(Including Terrace & Balcoy)



Seventh Floor



Fifth Floor
Entrance



Sixth Floor

For Illustration Purposes Only - Not To Scale

This floor plan should be used as a general outline for guidance only and does not constitute in whole or in part an offer or contract.
Any intending purchaser or lessee should satisfy themselves by inspection, searches, enquiries and full survey as to the correctness of each statement.
Any areas, measurements or distances quoted are approximate and should not be used to value a property or be the basis of any sale or let.