

# ROKSTONE



## Hertford Street, Mayfair W1J

This beautifully presented two bedroom lateral apartment is situated in a charming period mansion block, in the heart of Mayfair.

Boasting high ceilings and an abundance of light, the property comprises of an entrance hallway, spacious reception room, fully integrated kitchen, en-suite principal bedroom with generous wardrobe space, a further double bedroom and a separate show room. The property also benefits from a long leasehold tenure of in excess of 900 years.

Carrington House is located within the infamous heart of Mayfair, only a stone throw away from designer boutiques and restaurants and the exclusive private members club of 5 Hertford Street. The apartment is also within walking distance of Hyde Park and only moments away from Green Park tube station, making this property the ideal home or rental investment.

The apartment is West facing and the building also benefits from 24 hour portorage.

**Price £2,295,000**



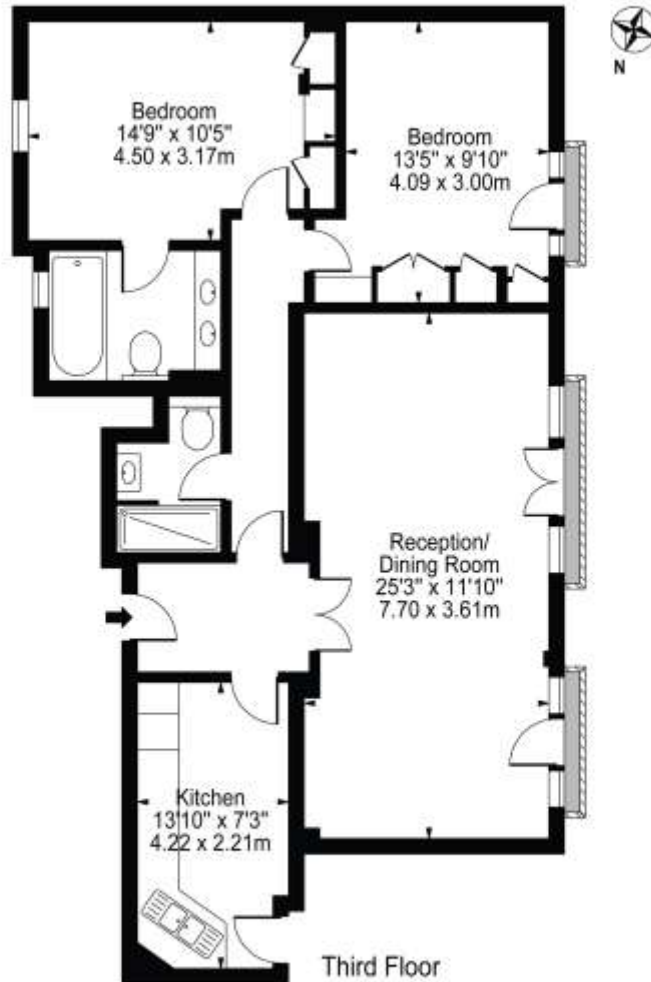
5 Dorset Street London W1U 6QJ

Tel: 020 7580 2030 | Email: [enquiries@rokstone.com](mailto:enquiries@rokstone.com)

<http://www.rokstone.com>

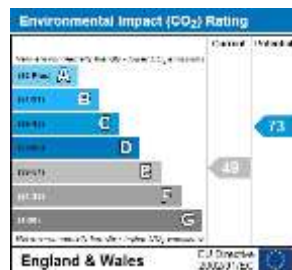
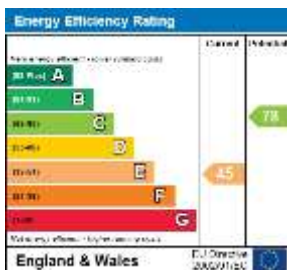
# ROKSTONE

Carrington House,  
Hertford Street  
Approx. Gross Internal Area 901 Sq Ft - 83.70 Sq M



For Illustration Purposes Only - Not To Scale

This floor plan should be used as a general outline for guidance only and does not constitute in whole or in part an offer or contract. Any intending purchaser or lessee should satisfy themselves by inspection, searches, enquiries and full survey as to the correctness of each statement. Any areas, measurements or distances quoted are approximate and should not be used to value a property or be the basis of any sale or let.



## Terms

Local Authority: Westminster City Council  
Tenure: Leasehold Approximately 953 Years  
Service Charge: £6,000PA