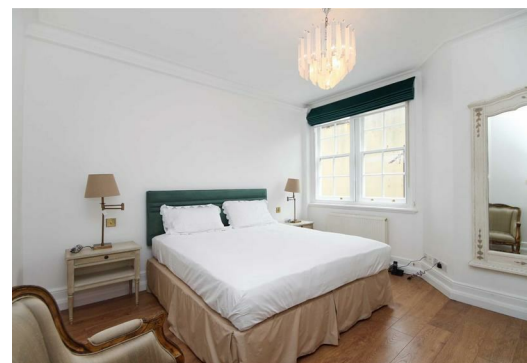


TATES

Residential Sales & Lettings



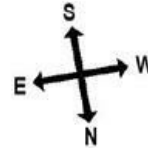
Brasenose House, Kensington High Street, W8 5BA
£1,100 Per week

- Three Bedrooms
- Lift
- Royal Borough of Kensington and Chelsea
- Close to public transport
- Unfurnished
- Three bathrooms
- Two balconies
- Energy Efficiency Rating Band: D

Brasenose House, W8

Approximate gross internal area

127 sq m / 1367 sq ft



Fourth Floor

Illustration for identification purposes only, not to scale
All measurements are maximum, and includes wardrobes and window bays where applicable
Prepared by Mays Floorplans © . Tel 020 8871 4668

Whilst these particulars are believed to be correct, no guarantee can be given for the measurements, appliances or services. It is our recommendation that all are tested. These are not intended to form part of any contract. Tate's accept no responsibility for their accuracy.

Energy Efficiency Rating		
	Current	Potential
Very energy efficient - lower running costs		
(92 plus) A		
(81-91) B		
(69-80) C		
(55-68) D		
(39-54) E		
(21-38) F		
(1-20) G		
Not energy efficient - higher running costs		
England & Wales		EU Directive 2002/91/EC

135 Hammersmith Rd London W14 0QL

T. 020 7602 6020 F. 020 7602 9522

mail@tatesestates.co.uk

tatesestates.co.uk

Tates (Agents) Ltd. Registered in England and Wales No. 2356337

Registered Office: 4th Floor Imperial House, 15 Kingsway London WC2B 6U

