



## Crescent Lane, SW4

£525,000

\*\*Guide Price £550,000-£575,000 \*\* Occupying the whole of the top floor of a period building, this light and spacious one bedroom property measures an incredible 655 Sq.Ft

- Abbeville Village
- 655 Square Feet
- Incredibly Light and Spacious
- 8 mins to Clapham Common
- Built-in storage and integrated appliances
- Share of Freehold

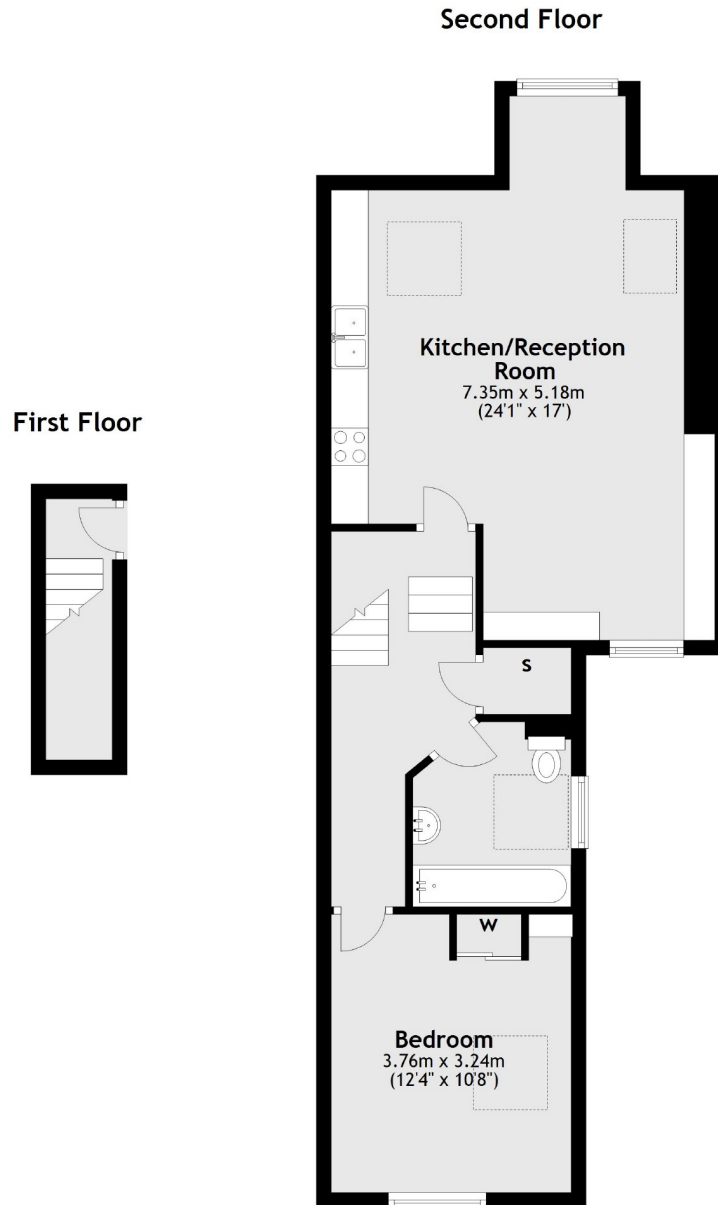


Entered on the first floor and arranged over the split levels of the second floor the apartment is stylishly arranged and has a fabulous main living space which houses the reception room and open plan fitted kitchen. This room has characterful eaves and a nook which works as a small study area which has a window adding to the natural light. The flooring is a rich wooden finish and the extensive fitted kitchen units are complimented by a range of quality appliances. The large double bedroom has a large built in wardrobe and lots of light from a window and Velux window. Finally the bathroom is luxuriously finished and more spacious than many.

Crescent Lane is just off Abbeville Road and as such is close to the central Village with shops, bars, restaurants and café's. Clapham Common is equally close as is the underground station on the Northern Line also at Clapham Common.







Total area: approx. 60.8 sq. metres (654.8 sq. feet)

Jacksons Clapham  
73 Abbeville Road  
London  
SW4 9JN  
020 8875 7995  
[clapham.sales@jacksonsestateagents.com](mailto:clapham.sales@jacksonsestateagents.com)

Energy Rating: D We aim to make our particulars both accurate and reliable. However they are not guaranteed; nor do they form part of an offer or contract. If you require clarification on any points then please contact us, especially if you're traveling some distance to view. Please note that appliances and heating systems have not been tested and therefore no warranties can be given as to their good working order.