

# FLETCHERS

ESTATE AGENTS



## Sinclair Gardens, W14

£1,300,000

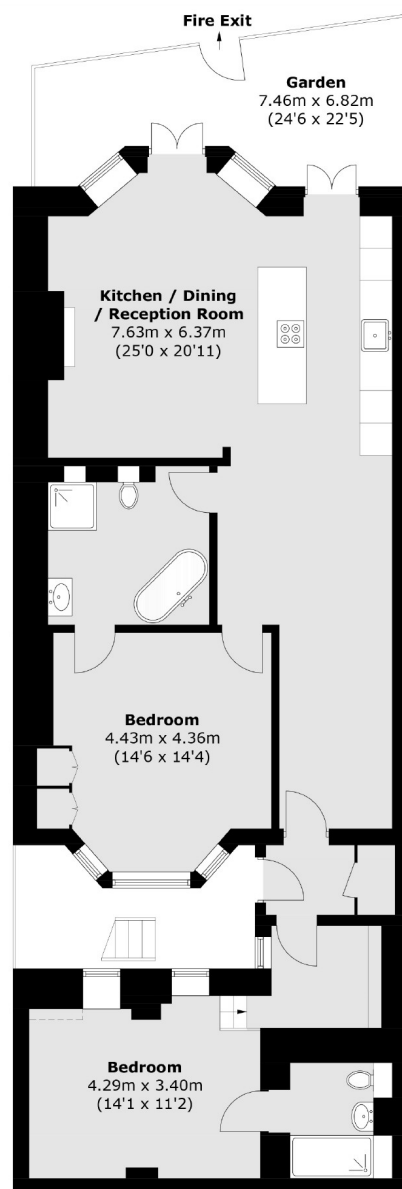
An architecturally designed two bedroom maisonette within an attractive Victorian building. The property has been carefully refurbished to offer elegant and contemporary living.

Sinclair Gardens is a popular tree-lined street in Brook Green that is superbly positioned for easy access to the green spaces of Holland Park and for the array of eclectic groceries and independent restaurants Brook Green has to offer. It is also close to Westfield Shopping Centre, offering some of the best retail shops and well-known bars and restaurants. It is also under a mile from Shepherds Bush Station (Central and Overground lines) providing easy links in and out of the centre.

• Share Of Freehold • Victorian Maisonette • Two Bedrooms • Private Entrance • South-Facing Garden • Immaculately Refurbished •

# FLETCHERS

## ESTATE AGENTS



**Lower Ground Floor**

Total area (approx.): 107.1 sq. m (1,153.0 sq. ft)

Fletchers Brook Green Sales  
144 Shepherds Bush Road, Hammersmith, London, W6 7PB  
020 7603 1415  
[brookgreensales@fletcherestates.com](mailto:brookgreensales@fletcherestates.com)

Energy Rating: C. We aim to make our particulars both accurate and reliable. However they are not guaranteed; nor do they form part of an offer or contract. If you require clarification on any points then please contact us, especially if you're traveling some distance to view. Please note that appliances and heating systems have not been tested and therefore no warranties can be given as to their good working order.