



Lowndes Mews, SW16

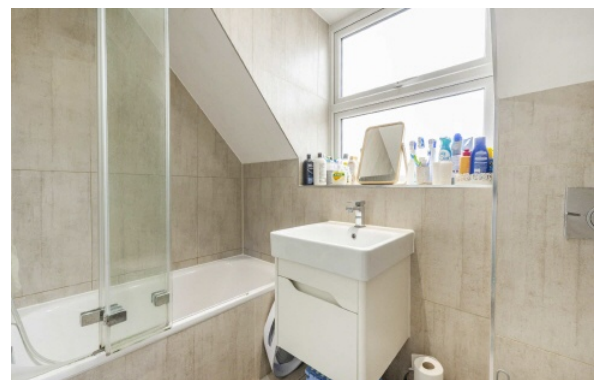
£600,000

A spacious two double bedroom, two bathroom house located in a purpose built development in the heart of Streatham Hill. The property benefits from an open plan kitchen living area and boasts ample storage as

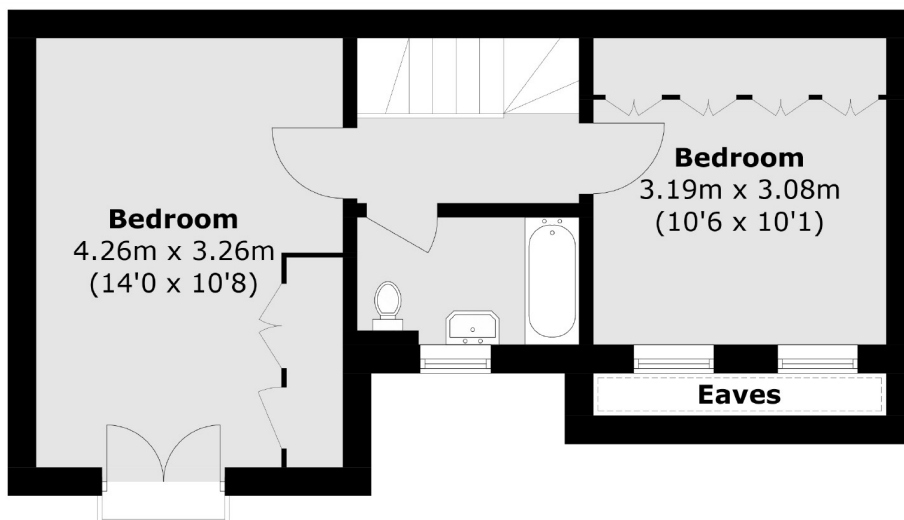
- Off Street Parking
- Two Double Bedrooms
- Purpose Built House
- Gated Mews
- No Chain
- Two Bathrooms



Located in the highly regarded Streatham Hill area, this property is well positioned for easy access into Balham and Streatham Hill and thus close to all of the shops, bars and restaurants local to the area. Balham mainline and underground stations are within close proximity as is Streatham Hill mainline station. There are also excellent bus routes providing a regular service to Brixton for access to the Victoria line. The green open spaces of Tooting Bec Common are at the end of the road.







First Floor



Ground Floor

Total area (approx.): 71.6 sq. m (770.6 sq. ft)
(Excluding Eaves)

Jacksons Streatham
1-3 De Montfort Parade
Streatham High Road
Streatham
London
SW16 1BU

Energy Rating: C We aim to make our particulars both accurate and reliable. However they are not guaranteed; nor do they form part of an offer or contract. If you require clarification on any points then please contact us, especially if you're traveling some distance to view. Please note that appliances and heating systems have not been tested and therefore no warranties can be given as to their good working order.