

SNELLERS

ESTATE AGENTS



Grasmere Avenue, TW3

£485,000

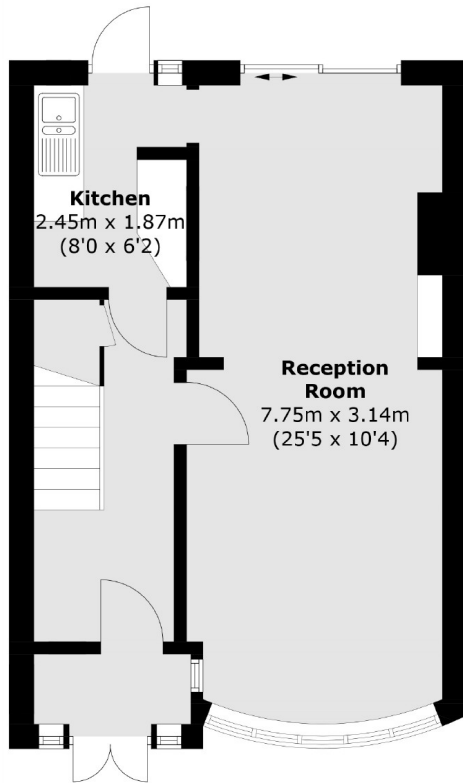
If you are looking for a family home on a quiet residential road, this is the house for you! This 1930's home has a through reception room, separate kitchen, three bedrooms and a family bathroom. There is potential to create a front driveway, to extend to the rear and into the loft STPP.

Grasmere Avenue is half mile from Murray Park and Hounslow station. Nelson Primary School, St Edmunds Primary school and Whitton station and high street are all also less than a mile's walk.

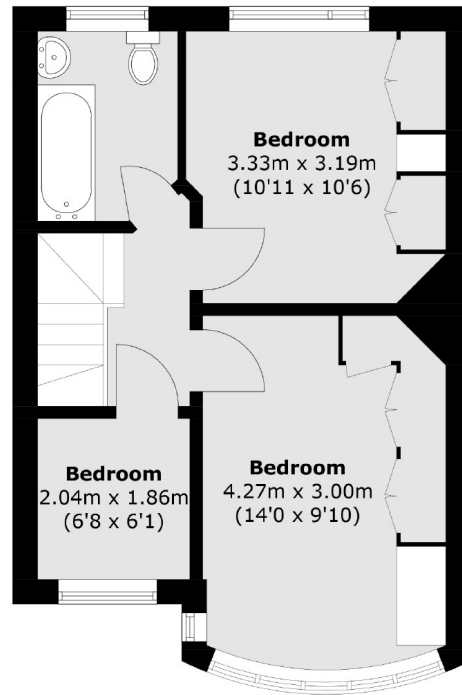
- Quiet Residential Location • 1930's Home • Three Bedrooms •
- Large Garden • Potential To Extend STPP • No Onward Chain •

SNELLERS

ESTATE AGENTS



Ground Floor



First Floor

Total area (approx.): 74.4 sq. m (800.8 sq. ft)

Snellers Twickenham Sales
64-66 Heath Road
Twickenham
TW1 4BX
020 8892 5555
twickenhamsales@snellers.co.uk

Energy Rating: E We aim to make our particulars both accurate and reliable. However they are not guaranteed; nor do they form part of an offer or contract. If you require clarification on any points then please contact us, especially if you're traveling some distance to view. Please note that appliances and heating systems have not been tested and therefore no warranties can be given as to their good working order