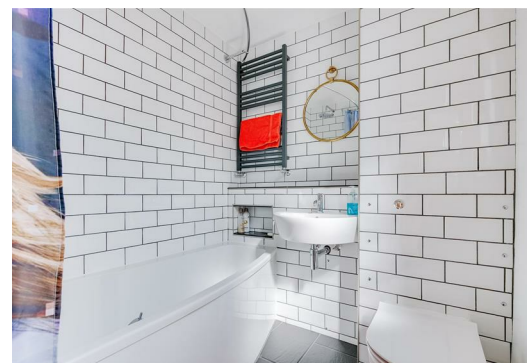


TATES

Residential Sales & Lettings



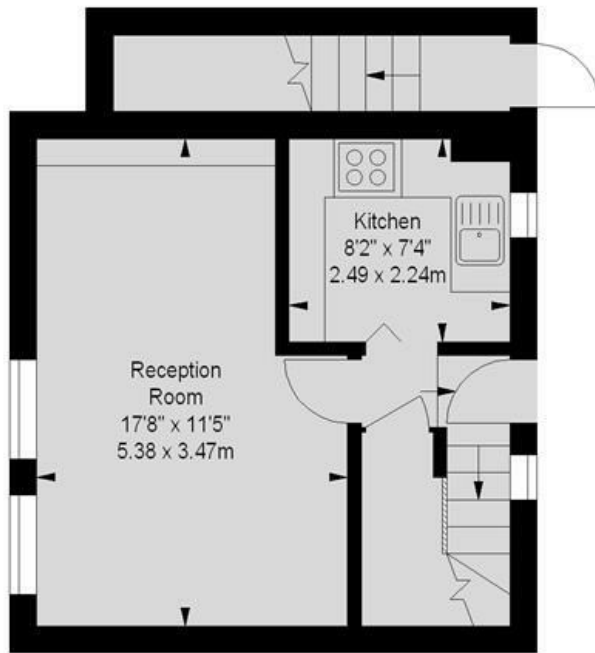
St Paul's Court, London W14 9YB

£435,000

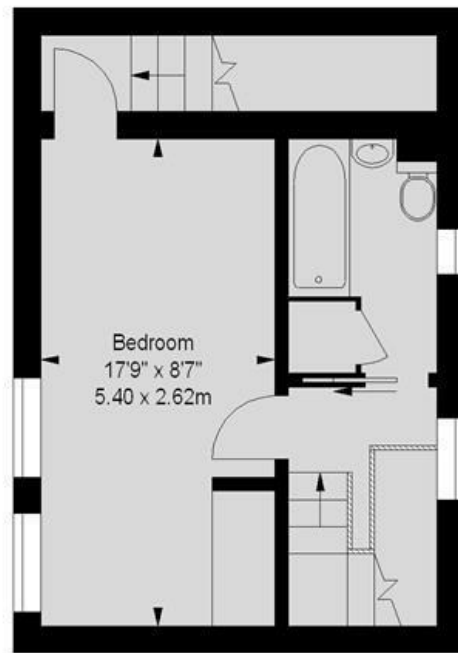
- One Bed Maisonette
- Third/Fourth Floors (Lift)
- Gated Development
- Share of Freehold
- Hammersmith tube (Hammersmith & City, District, Piccadilly Lines)
- Larger than Average
- Communal Gardens
- Management Office on Site
- Barons Court tube (District & Piccadilly Lines)

Lily Close, W14

Approximate gross internal area
662 sq ft / 61.51 sq m



Third Floor
355 sq ft



Fourth Floor
307 sq ft

Illustration For Identification Purposes Only. Not To Scale
*Floorplan Drawn According To RICS Guidelines

Whilst these particulars are believed to be correct, no guarantee can be given for the measurements, appliances or services. It is our recommendation that all are tested. These are not intended to form part of any contract. Tate's accept no responsibility for their accuracy.

135 Hammersmith Rd London W14 0QL

T. 020 7602 6020 F. 020 7602 9522

mail@tatesestates.co.uk

tatesestates.co.uk

Tates (Agents) Ltd. Registered in England and Wales No. 2356337

Registered Office: 4th Floor Imperial House, 15 Kingsway London WC2B 6U

Energy Efficiency Rating		
	Current	Potential
Very energy efficient - lower running costs		
(92 plus) A		
(81-91) B		
(69-80) C	69	69
(55-68) D		
(39-54) E		
(21-38) F		
(1-20) G		
Not energy efficient - higher running costs		
England & Wales		
EU Directive 2002/91/EC		

