

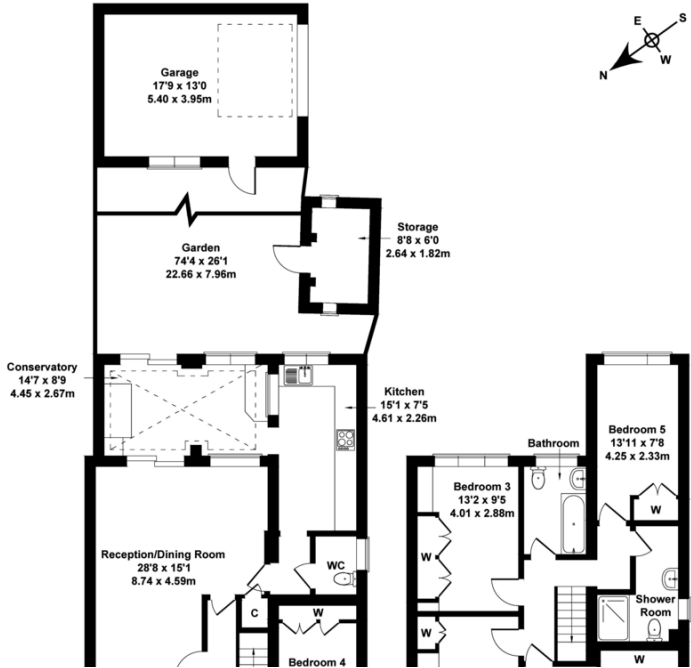


%epcGraph_c_1_333%



Sunningdale Avenue, TW13

Approximate Gross Internal Area
1916 sq ft - 178 sq m
(Including Garage&Storage)



10 Central Parade, New Heston Road,
Heston, Middlesex, TW5 0LH

www.shawandcoestates.com
020 8570 7258
heston@shawandcoestates.com

Agents Note: Whilst every care has been taken to prepare these particulars, they are for guidance purposes only. All measurements are approximate and are for general guidance purposes only and whilst every care has been taken to ensure their accuracy, they should not be relied upon and potential buyers/tenants are advised to recheck the measurements.