

Is this the one?



£230,000

**River Lea Mews
Crewe CW3 9EH**



- Beautifully Presented Mews Style Property
- Two Spacious Bedrooms
- Kitchen/Diner
- Lounge with Patio Doors
- Downstairs W.C
- Parking and Detached Garage

heywoods | 888 |

It's all in the detail.

Heywoods 1881 are delighted to welcome to the sales market this beautifully presented two bedroom mews style property, located in the sought after area of Madeley, close to good local schools and nearby amenities! The property is a credit to the current owner and has been modernised and updated over recent months. The spacious accommodation briefly comprises; porch, entrance hall, w.c., kitchen/diner and lounge with patio doors. To the first floor, there are two spacious double bedrooms and family bathroom. To the second floor there is a useable loft room currently used as a bedroom with two Velux windows. Externally, the property benefits from a private and enclosed rear garden with patio area and steps leading down to the stream with second seating area! To the front, there is a low maintenance front garden, driveway and garage! Viewing is essential!

PORCH With front door, door to w.c. and door to hallway, tiled floor, coving to ceiling and radiator.

ENTRANCE HALL With tiled floor, radiator, doors to kitchen and lounge and coving to ceiling.

W.C 7' 4" x 2' 10" (2.24m x 0.88m) With low level w.c., wash hand basin, tiled floor, radiator and coving to ceiling.

KITCHEN/DINER 15' 2" x 12' 5" (4.63m x 3.81m) With a range of wall and base units, tiled splashbacks, bowl and a half sink and

drainer, integrated oven with gas hob and extractor over, space for fridge freezer, dishwasher and washing machine, tiled flooring, radiator and window to front.

LOUNGE 17' 1" x 15' 7" (5.23m x 4.77m) With wood effect flooring, gas fire with feature surround, radiator, coving to ceiling, ceiling rose, stairs to first floor, window to rear and sliding patio doors leading onto garden.

FIRST FLOOR LANDING With stairs to second floor, carpet, doors to both double bedrooms and family bathroom, coving to ceiling and alarm panel.

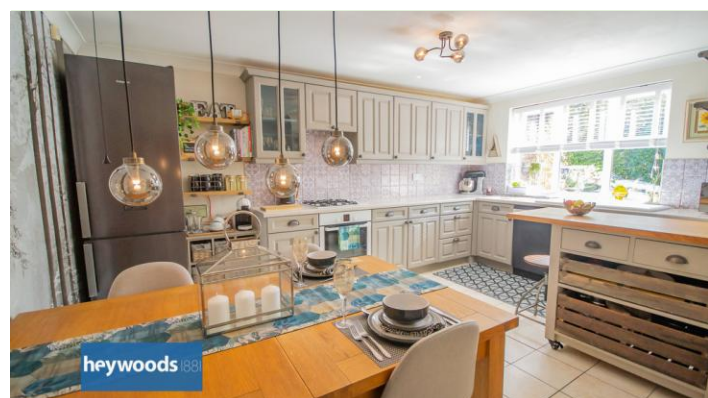
MASTER BEDROOM 17' 1" x 9' 8" (5.22m x 2.96m) With two windows to front, two radiators, door to storage cupboard, carpet to floor and coving to ceiling.

BEDROOM TWO 12' 1" x 10' 1" (3.70m x 3.09m) With window to rear, door to storage cupboard, radiator, carpet to floor and coving to ceiling.

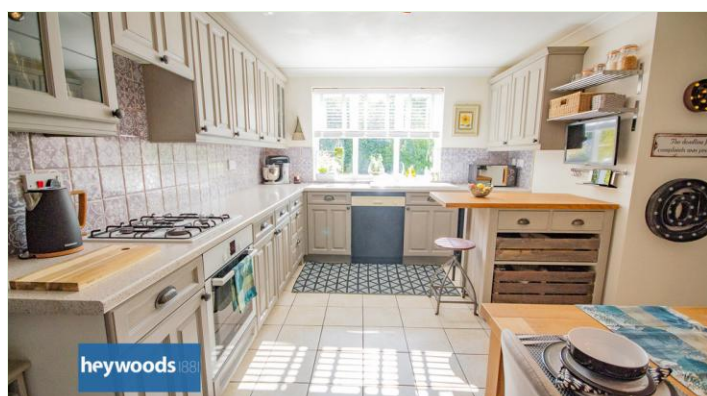
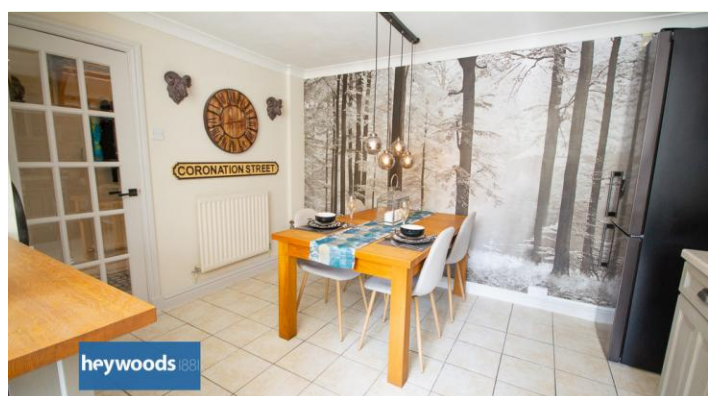
FAMILY BATHROOM 8' 9" x 6' 7" (2.68m x 2.02m) With four piece suite, bath with shower over, low level w.c., wash hand basin, bidet, window to rear, radiator, carpet to floor, coving to ceiling and extractor fan.

LOFT ROOM 17' 0" x 12' 9" (5.20m x 3.90m) With two Velux windows, carpet to floor, radiator, storage space and feature sunken bed.

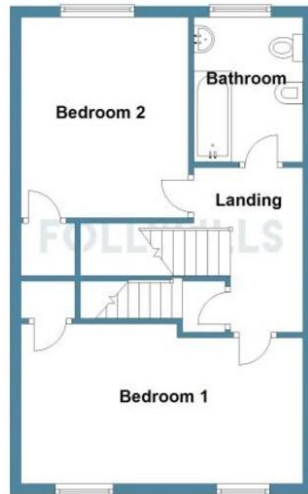
EXTERNALLY Externally, the property benefits from a private and enclosed rear garden with patio area and steps leading down to the stream with second seating area! To the front, there is a low maintenance front garden, driveway and garage! Viewing is essential!



Can you
picture
yourself
here?



First Floor



Ground Floor



Second Floor



For indicative purposes only. All measurements are approximate.
Plan produced using PlanUp.

Selling & letting
homes throughout
Staffordshire &
Cheshire.



How much would
I get to rent this
property?

hey let's talk to our
lettings guru and find
out...

%epcGraph_c_1_130
_rZ%

The Estate Offices Blackfriars
Road Newcastle-under-Lyme
ST5 2EB

01782 617343
heywoodsproperty.co.uk



DISCLAIMER: All measurements are taken electronically and whilst every care is taken with their accuracy they must be considered approximate and should not be relied upon when purchasing carpets or furniture. No responsibility is taken for any error, omission or misunderstanding in these particulars which do not constitute an offer or contract. Services and appliances have not been tested and therefore no warranty is offered on their operational condition.

