

FLETCHERS

ESTATE AGENTS



St. Peters Grove, W6

£1,200,000

A rare opportunity to purchase an unmodernised, double-fronted, Victorian house in the heart of the desirable St. Peter's Conservation Area.

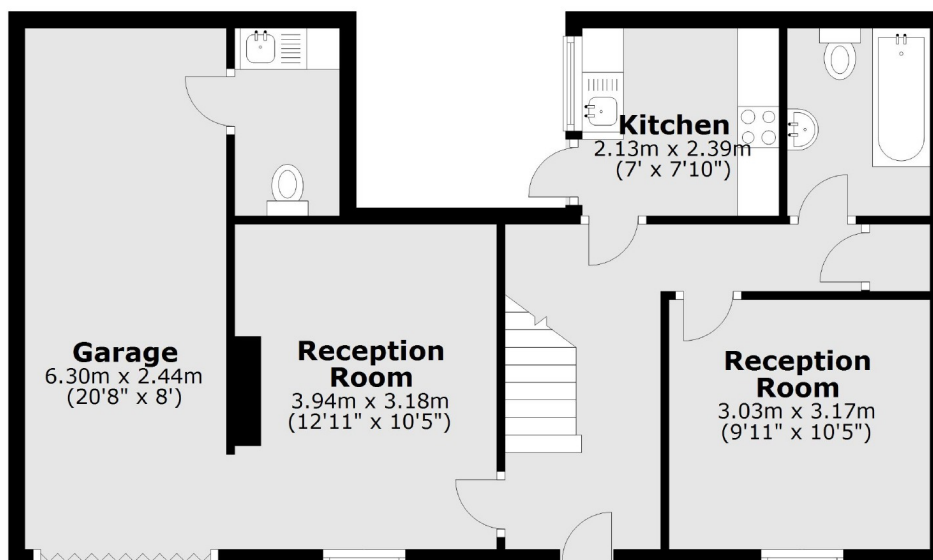
The house is located excellently for the local amenities of the conservation area itself with many excellent pubs and restaurants nearby. The house is also within catchment of some outstanding local schools. The Thames Path is under a mile away as are the restaurants, shops & boutiques of Chiswick High Road and King Street.

- Double-Fronted • Off-Street Parking • Unmodernised • Scope to Add Value (STPP) • Garage • Victorian •

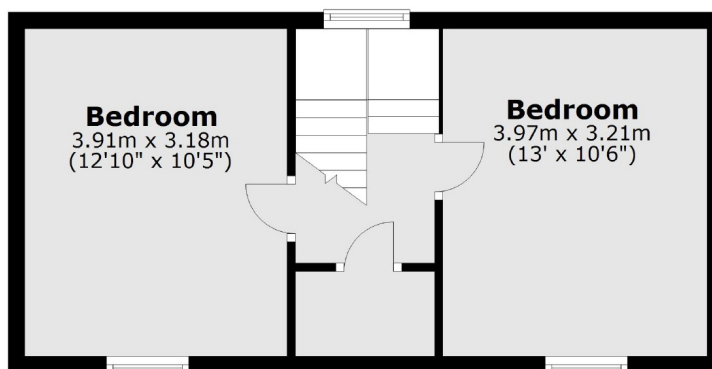
FLETCHERS

ESTATE AGENTS

Ground Floor



First Floor



Total area: approx. 95.3 sq. metres (1026.0 sq. feet)

Fletchers Brook Green Sales
144 Shepherds Bush Road, Hammersmith, London, W6 7PB
020 7603 1415
brookgreensales@fletcherestates.com

Energy Rating: E. We aim to make our particulars both accurate and reliable. However they are not guaranteed; nor do they form part of an offer or contract. If you require clarification on any points then please contact us, especially if you're traveling some distance to view. Please note that appliances and heating systems have not been tested and therefore no warranties can be given as to their good working order.