



## Kirkstall Gardens, SW2

£2,250 PCM

A three bedroom house located on one of the most sought after Roads in Streatham Hill. Comprising a large reception room, kitchen breakfast room, garden, three bedrooms and a bathroom, this 1930s house would

- Three Bedroom House
- Garden
- Telford Park Conservation Area
- Newly Refurbished

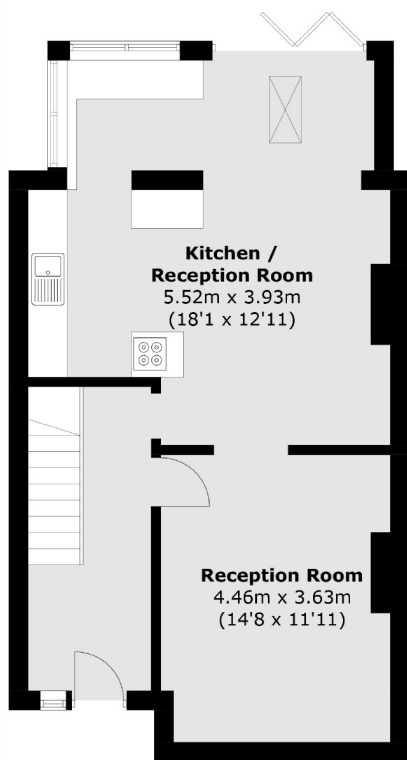
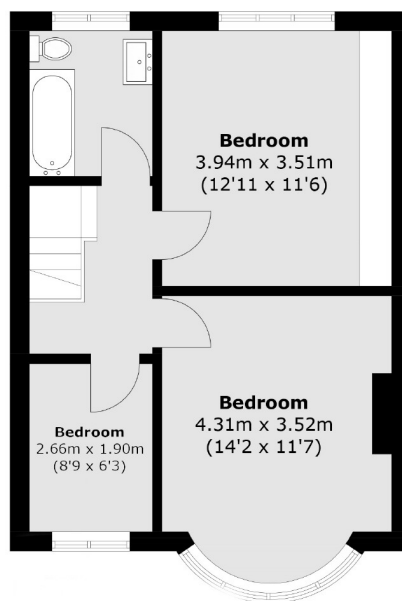
For further information on the costs associated with renting a property, please pop into our office or visit our website.



Kirkstall Gardens is conveniently located in the Telford Park conservation area between Balham and Streatham. Tooting Common is a short walk, Brixton is a short bus ride away.






**Ground Floor**

**First Floor**

Total area (approx.): 101 sq. m (1,087.0 sq. ft)

Jacksons Streatham  
1-3 De Montfort Parade  
Streatham High Road  
Streatham  
London  
SW16 1BU

Energy Rating: We aim to make our particulars both accurate and reliable. However they are not guaranteed; nor do they form part of an offer or contract. If you require clarification on any points then please contact us, especially if you're traveling some distance to view. Please note that appliances and heating systems have not been tested and therefore no warranties can be given as to their good working order.