



**ASHFORD
HOMES**
(SOUTH WESTERN) LIMITED

Crafting beautiful homes



St Peters School

DEVIZES, WILTSHIRE





St Peters School

DEVIZES, WILTSHIRE SN10 2SU

St Peters School is a collection of 25 magnificent homes including 17 varied and unique houses and eight apartments. Part of the development consists of the conversion of a landmark former Victorian school, incorporating the original Victorian detailing. The development is situated in a popular and well established residential area of Devizes and backs onto the Kennet & Avon Canal; part of a waterway joining London to Bristol and famed for its flight of twenty-nine locks, an engineering and aesthetic marvel walking distance from the town, and a paradise for canoeists, barges and anglers.

Featuring a wealth of listed buildings and a weekly market, the bustling town enjoys a beautiful setting amidst Wiltshire's chalk downlands criss-crossed by ancient byways and prehistoric earthworks providing a scenic playground for walkers and cyclists. Cultural facilities include a museum, active theatre, cinema and vibrant live-music scene. The town centre offers a wide range of amenities including a choice of supermarkets, independent shops, a modern leisure centre with indoor swimming pool, public library, and schooling for all age groups. The major centres of Bath, Salisbury, Swindon, Marlborough and Chippenham are all within a 30-mile radius.

Junction 17 of the M4 motorway lies around 17 miles to the north with the M3 motorway via the A303 to the south. Mainline railway services to London Paddington are available in Pewsey, Chippenham and Westbury, also from Andover to Waterloo.

There are a number of nearby primary and secondary schools nearby including St Joseph's Catholic Primary School less than half a mile away and Devizes School (with a Sixth Form) can be found a mile from St Peter's School.



*Enjoy the wonderful Kennet & Avon Canal
as it winds its way through the
bustling Medieval Market Town of Devizes*

How to find us



Please note that the specification was correct at the time of going to print but Ashford Homes continually review their specifications and reserve the right to make any changes. The measurements have been taken from the plan provided but there may be variations in the final build. The computer generated images are for illustrative purposes only and are not intended to be scaled or used to indicate boundaries and should only be used for guidance. Prospective purchasers are advised that the development name may not be the final postal address.



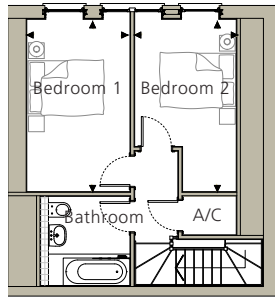
Site Plan



*St Peters School is
a superb and unique collection
of two to five bedroom homes
combining the finest in
design, quality and finish*



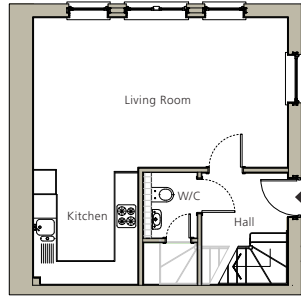
Plots 10 • 11



PLOT 11 FIRST

Bedroom 1
3.70m x 4.10m
12'2" x 13'5"

Bedroom 2
3.05m x 3.90m
10'0" x 12'10"



PLOT 11 GROUND

Kitchen
3.06m x 2.76m
10'0" x 9'1"

Living Room
4.24m x 7.32m
13'11" x 24'0"

Plots 12 • 13

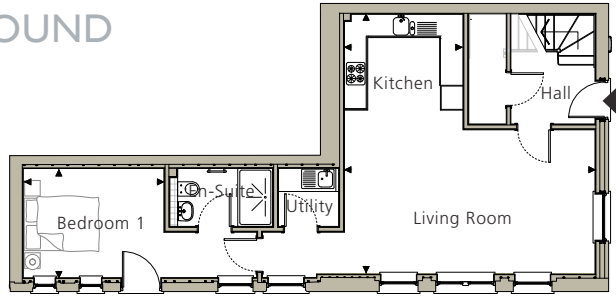


PLOT 10 GROUND

Kitchen
2.99m x 3.50m
9'10" x 11'6"

Living Room
2.55m x 8.06m
8'4" x 26'5"

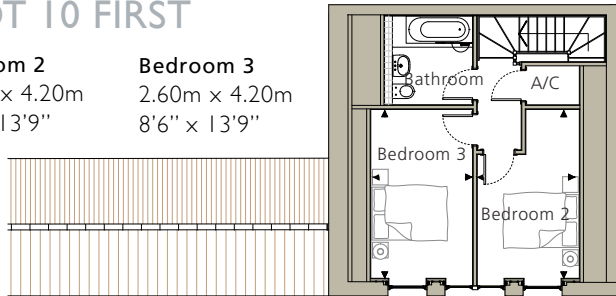
Bedroom 1
4.46m x 3.47m
14'8" x 11'5"



PLOT 10 FIRST

Bedroom 2
2.60m x 4.20m
8'6" x 13'9"

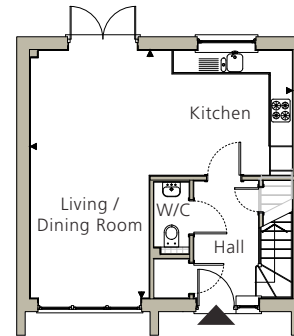
Bedroom 3
2.60m x 4.20m
8'6" x 13'9"



GROUND

Kitchen
3.60m x 3.20m
11'9" x 10'6"

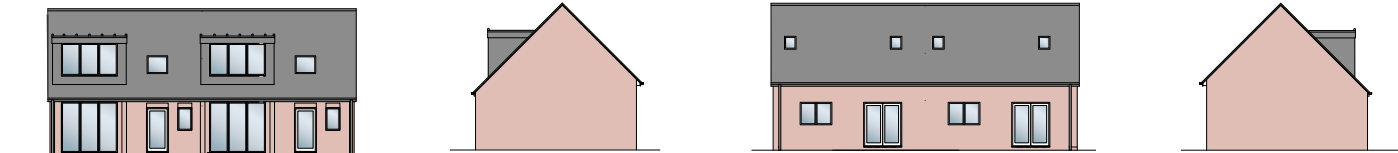
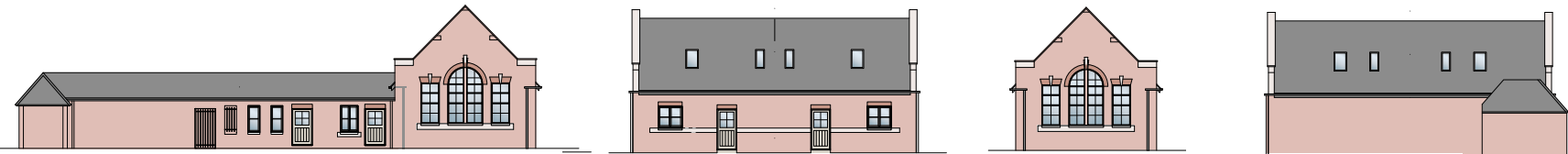
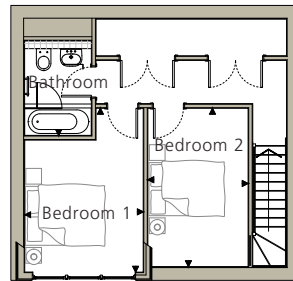
Living / Dining Room
3.00m x 6.30m
9'10" x 20'8"



FIRST

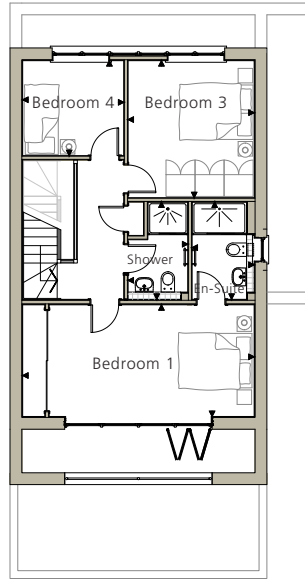
Bedroom 1
3.02m x 4.17m
9'11" x 13'8"

Bedroom 2
2.55m x 3.04m
8'4" x 9'12"



Please note these measurements have been taken from the plan provided but there may be variations in the final build.

Plot 14



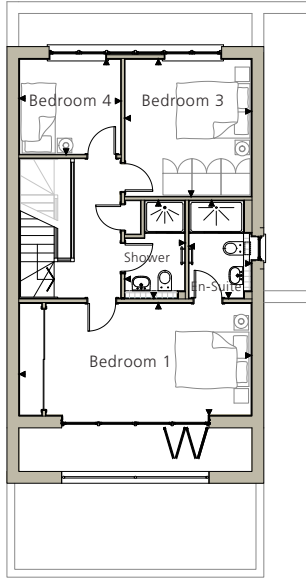
FIRST

Bedroom 1
6.38m x 3.08m
20'11" x 10'1"

Bedroom 3
3.47m x 3.78m
11'5" x 12'5"

Bedroom 4
2.79m x 2.62m
9'2" x 8'7"

Plot 15

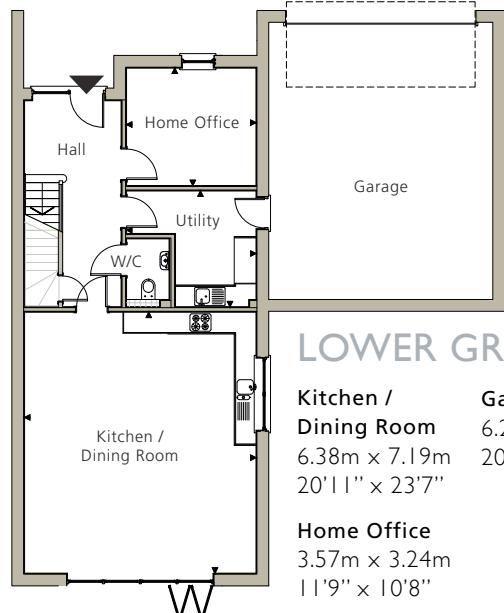


FIRST

Bedroom 1
6.38m x 3.08m
20'11" x 10'1"

Bedroom 3
3.47m x 3.78m
11'5" x 12'5"

Bedroom 4
2.79m x 2.62m
9'2" x 8'7"

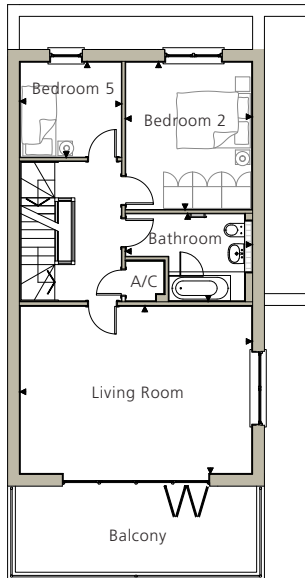


LOWER GROUND

Kitchen / Dining Room
6.38m x 7.19m
20'11" x 23'7"

Home Office
3.57m x 3.24m
11'9" x 10'8"

Garage
6.20m x 7.60m
20'4" x 24'11"

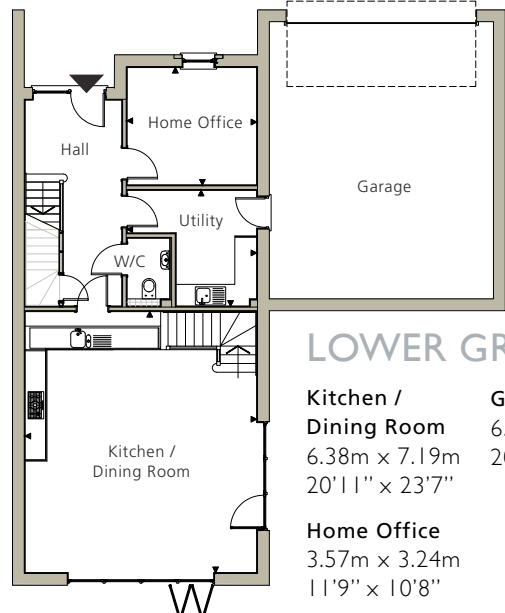


GROUND

Living Room
6.38m x 4.60m
20'11" x 15'1"

Bedroom 2
3.47m x 4.06m
11'5" x 13'4"

Bedroom 5
2.80m x 2.60m
9'2" x 8'6"

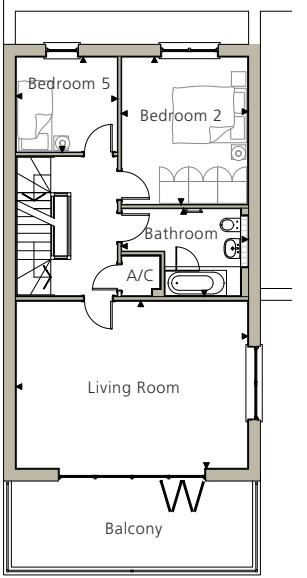


LOWER GROUND

Kitchen / Dining Room
6.38m x 7.19m
20'11" x 23'7"

Home Office
3.57m x 3.24m
11'9" x 10'8"

Garage
6.20m x 7.60m
20'4" x 24'11"



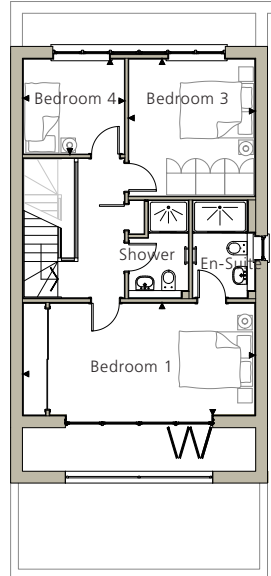
GROUND

Living Room
6.38m x 4.60m
20'11" x 15'1"

Bedroom 2
3.47m x 4.06m
11'5" x 13'4"

Bedroom 5
2.80m x 2.60m
9'2" x 8'6"

Plot 16



FIRST

Bedroom 1
6.38m x 3.08m
20'11" x 10'1"

Bedroom 3
3.47m x 3.78m
11'5" x 12'5"

Bedroom 4
2.79m x 2.62m
9'2" x 8'7"

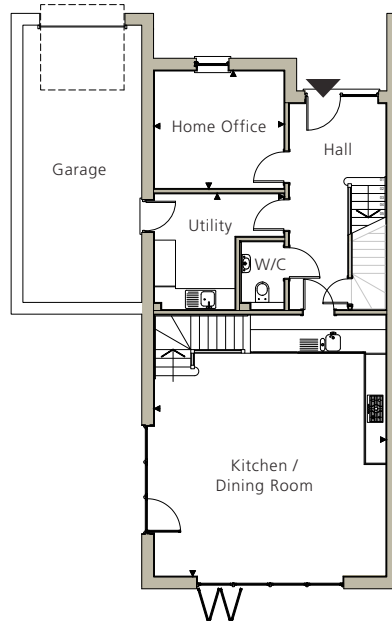


LOWER
GROUND

**Kitchen /
Dining Room**
6.38m x 7.19m
20'11" x 23'7"

Home Office
3.57m x 3.24m
11'9" x 10'8"

Garage
3.30m x 7.60m
10'10" x 24'11"

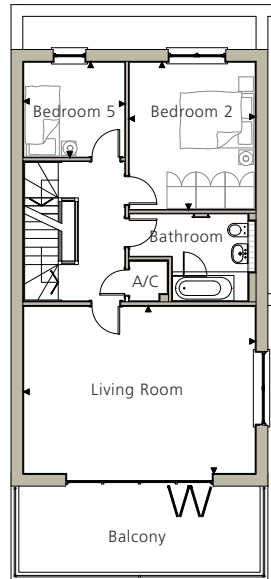


GROUND

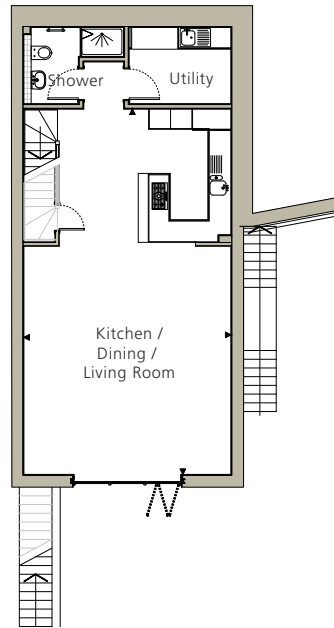
Living Room
6.38m x 4.60m
20'11" x 15'1"

Bedroom 2
3.47m x 4.06m
11'5" x 13'4"

Bedroom 5
2.80m x 2.60m
9'2" x 8'6"



Plots 17 • 20 • 23

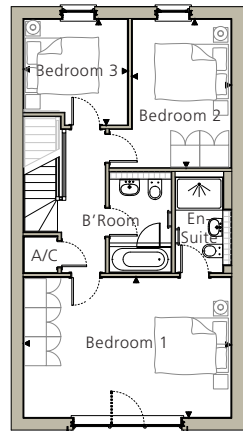


LOWER
GROUND

**Kitchen / Dining /
Living Room**
5.70m x 10.07m
18'8" x 33'0"

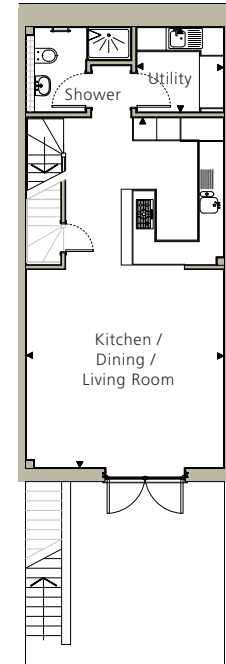
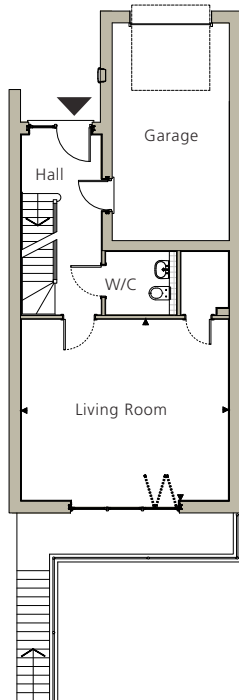
GROUND

Living Room
5.70m x 4.99m
18'8" x 16'4"
Garage
3.20m x 6.00m
10'6" x 19'8"



FIRST

Bedroom 1
5.70m x 3.85m
18'8" x 12'8"
Bedroom 2
2.72m x 4.09m
8'11" x 13'5"
Bedroom 3
2.85m x 2.91m
9'4" x 9'7"

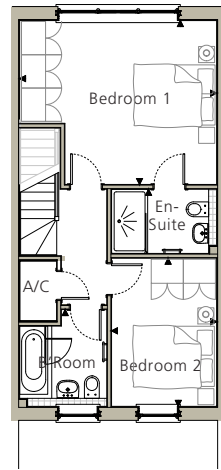


LOWER
GROUND

**Kitchen / Dining /
Living Room**
4.91m x 8.72m
16'1" x 28'7"

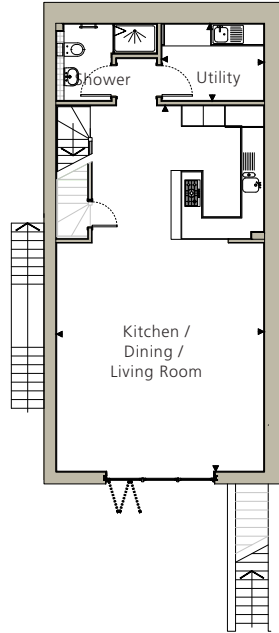
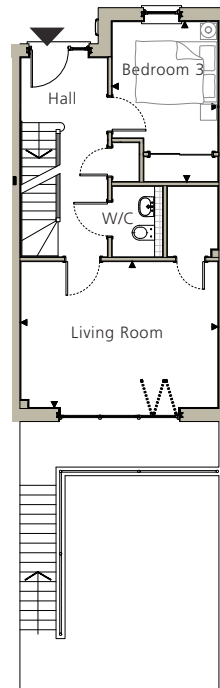
GROUND

Living Room
4.91m x 3.64m
16'1" x 11'11"
Bedroom 3
2.64m x 3.98m
8'8" x 13'1"



FIRST

Bedroom 1
4.91m x 4.09m
16'1" x 13'5"
Bedroom 2
2.62m x 3.69m
8'7" x 12'1"

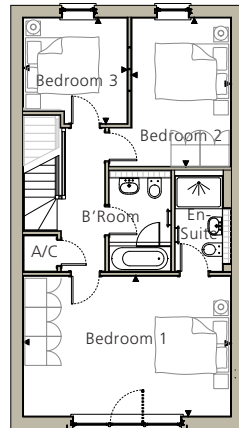


LOWER
GROUND

**Kitchen / Dining /
Living Room**
5.70m x 10.07m
18'8" x 33'0"

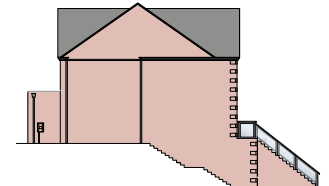
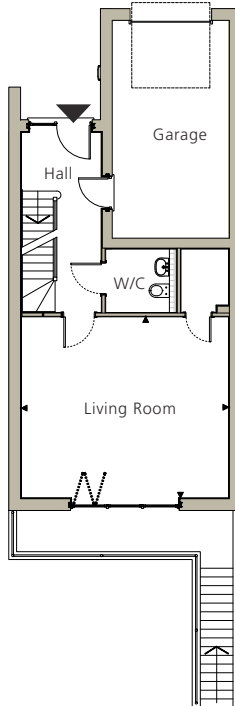
GROUND

Living Room
5.70m x 4.99m
18'8" x 16'4"
Garage
3.20m x 6.00m
10'6" x 19'8"



FIRST

Bedroom 1
5.70m x 3.85m
18'8" x 12'8"
Bedroom 2
2.72m x 4.09m
8'11" x 13'5"
Bedroom 3
2.85m x 2.91m
9'4" x 9'7"



Features and options

Construction

- Traditionally constructed comprising red brick elevations with cast stone architectural features.
- Slate grey roofs.
- Aluminium windows.
- LABC 10 year guarantee.

Internal

- Central heating comprising gas condensing boiler supplying under floor heating throughout with individual room thermostats. Option for individual room programming, central control, control via smartphone or tablet and remote operation over internet.
- Towel radiators in bathrooms with control independent of main heating system allowing use in summer.
- Comprehensive electrical installation including energy efficient LED recessed down lights to kitchen, bathrooms, living room, hallway/landings and main bedroom.
- Contemporary oak ladder doors.
- Decoration - emulsion to walls with white ceilings and white gloss finish woodwork.
- Wardrobes - sliding glass fronted doors with shelf and hanging rail.

Audio Visual Infrastructure

- TV aerial and distribution amplifier fitted as standard.
- Optional HD and network distribution to selected locations from comms position.
- An audio entertainment infrastructure has been installed which allows for music/TV sound to be played via unobtrusive high quality in-ceiling speakers in selected areas.

For full details, please see the Audio-visual options data sheet.

Kitchen

- Luxury fitted kitchen.
- Fully integrated appliances.
- Granite or Quartz worktops.

Bathrooms

- *En-Suite (plot dependent)*
Villeroy & Boch sanitary ware comprising back to wall WC, wall hung basin and low profile shower tray with Merlyn shower enclosure. Hansgrohe chrome fittings with exposed thermostatic shower featuring large fixed shower head and separate handheld rinse. Marble worksurfaces.
- *Bathroom*
Villeroy & Boch sanitary ware comprising back to back to wall WC, wall hung basin and bath with Merlyn bath screen over. Hansgrohe chrome fittings with exposed thermostatic bath/shower mixer with riser rail. Low level blue LED mood lighting. Marble worksurfaces.

Tiling

- Bathrooms to be tiled to approximately 1.2m high throughout with shower areas fully tiled to ceiling. Kitchen and bathroom floors to be tiled. Tile choices available (subject to stage of construction) from a selected range.

External

- Main incoming road in tarmacadam.
- Parking spaces in block paviments.
- Front gardens planted and/or turfed.
- Rear gardens top soiled.

Services

- Mains electric, gas, water and drainage services will be connected.
- Telephone infrastructure will be installed.

Upgrade options

- Flooring to areas other than kitchen and bathrooms.
- Central heating control options.
- Audio options.
- Ceiling mounted wireless access points.
- Satellite dish, DAB antenna & FM.
- Security system.
- Bathroom accessories.
- Water softener (plot dependant).
- Additional wardrobes.



A proud history

We want you to buy and move into your home with absolute confidence, so you can enjoy it fully from day one. From the moment the sale is agreed we will work with you to take care of every detail and keep you informed.

Ashford Homes has been building luxury homes of true character for over 30 years throughout the South West. We are well-known for creating developments that uphold local traditions and are a pleasure to live in.

Over recent years our build quality has been recognised with awards from both Wiltshire and B&NES building control bodies.

Our dedicated staff and sub-contractors are mostly local people. They take a real pride in their work and understand local materials and methods. Many have been working with the company for years, upholding the trades and traditions that Ashford Homes is proud to promote.

This generates a fantastic quality product but just to be absolutely sure we have rigorous quality controls that conform fully to all industry standards, including environment and safety.

All new homes come with a 10 year structural warranty provided by LABC, as well as a comprehensive and efficient aftercare service from our team. Nothing is more important to us than our customers.

What our customers say

“I wanted to tell you how pleased I am with my new home. The design of the house is great and unlike many new builds I have seen, Ashford Homes seem to have thought about space and light. In addition I want to say that both your site manager and your sales manager have both been more than helpful in the two months since I have been in my new home. Thanks for all your help.”

Mrs N

“Thank you so much Ashford Homes. I love my new house. Every part of the moving process was handled with care and efficiency and most importantly the quality and finish of the house is superb. Nothing has been too much trouble, either before or after the move, and that kind of service is hard to find in any industry let alone the housing industry. Having had such a great experience, I wouldn't want to buy a new home from anyone else.”

Mr D



“We are very happy with the results of the house, the standard of workmanship is first class and the whole team should be congratulated on a fine effort.”

Mr and Mrs N

“The quality of finish throughout the house, as well as the high standard of fixtures and fittings and the professional, caring attitude of the staff involved are but a few of the highly recommendable traits of an Ashford Homes property.”

Mr and Mrs G

“My wife and I are delighted with our purchase, location and quality of build are top quality. One of the best features of our dealings with Ashford Homes has been the friendliness and availability of your staff and directors.”

Mr and Mrs V

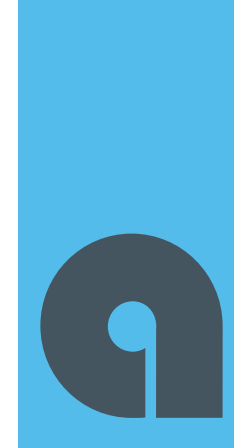
Ashford Homes (South Western) Ltd

Doric House, Middleton Drive, Bradford on Avon, Wiltshire, BA15 1GB

t: 01225 791155

e: sales@ashford-homes.co.uk

www.ashford-homes.co.uk



**ASHFORD
HOMES**
(SOUTH WESTERN) LIMITED

Crafting beautiful homes



Viewing

Strictly by appointment with Ashford Homes (South Western) Ltd or our nominated agents. Please use the contact details above.

Reservation

A reservation fee will secure your house at St Peters School.

Strakers

6-7 Market Place, Devizes, Wiltshire, SN10 1HT

t: 01380 723451

e: devizes@strakers.co.uk

www.strakers.co.uk

