

# Frank Harris & Co.



## Andrewes House, EC2Y

£850,000

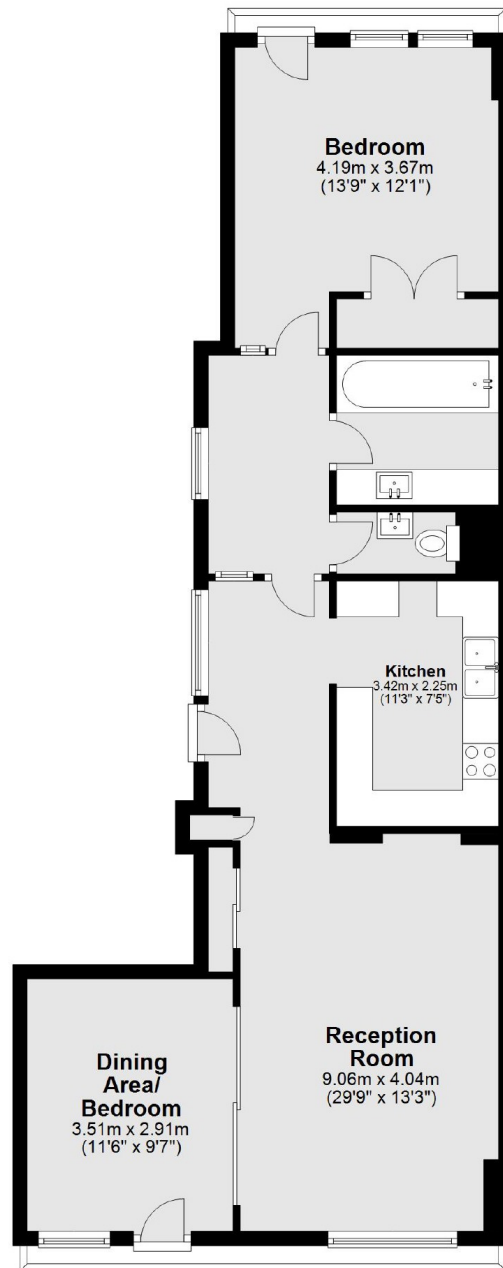
This lovely one bedroom flat has recently been decorated throughout and retains many of the sought after original fixtures and fittings. The bedroom has a peaceful setting overlooking the Barbican lake and the reception room has a south with a full height full width window and door opening out to the balcony.

Situated close to both Moorgate and Liverpool street station which will benefit from the future Crossrail line. There is a full size Waitrose nearby on Whitecross Street.

- Large One bedroom Flat • Type 20 • Brooke Marine Kitchen •
- No Onward Chain • Use Of Residents Gardens • Overlooking Lake •

# Frank Harris & Co.

## Third Floor



Total area: approx. 74.0 sq. metres (796.8 sq. feet)

Frank Harris & Co. Barbican and City  
87 Long Lane, London,  
EC1A 9ET  
020 7600 7000  
[citysales@frankharris.co.uk](mailto:citysales@frankharris.co.uk)

Energy Rating: TBC. We aim to make our particulars both accurate and reliable. However they are not guaranteed; nor do they form part of an offer or contract. If you require clarification on any points then please contact us, especially if you're traveling some distance to view. Please note that appliances and heating systems have not been tested and therefore no warranties can be given as to their good working order.