

SNELLERS

ESTATE AGENTS



St. Margarets Road, TW1

£999,950

Situated on this corner plot is this unique opportunity to acquire a four bedroom semi detached family home including a former shop with the ability to redevelop (subject to planning permission) and is offered to the market with no onward chain.

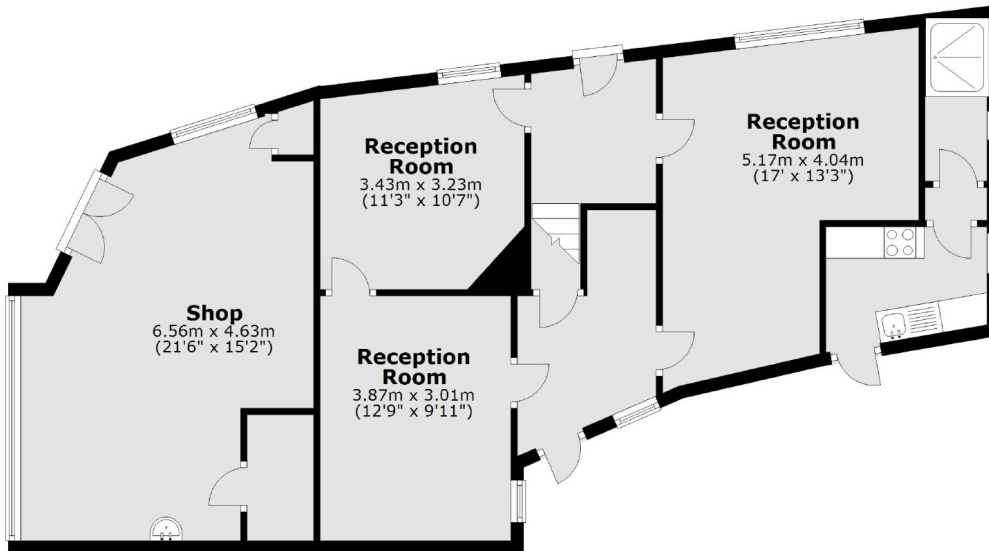
St Margarets road is a popular residential road located near to the mainline train service into London Waterloo, and within the catchment of St Stephens Primary School with the added bonus of being moments from the River Thames and its tow path walks into Richmond.

- Semi Detached • Four Bedrooms • Potential to Develop •
- Corner Plot • Off-Street Parking • No Chain •

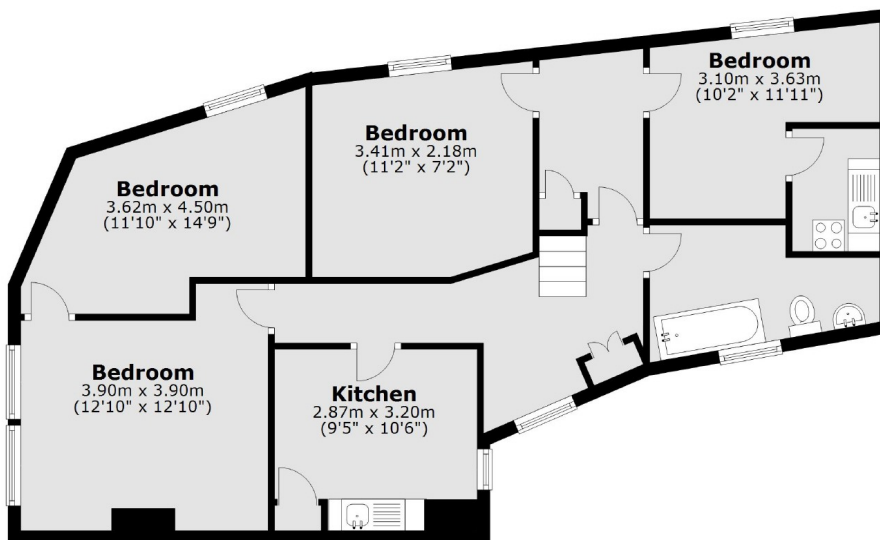
SNELLERS

ESTATE AGENTS

Ground Floor



First Floor



Main area: Approx. 143.0 sq. metres (1539.4 sq. feet)
Plus shop, approx. 24.0 sq. metres (258.7 sq. feet)

Snellers St. Margarets Sales
36 Crown Road
St Margarets
TW1 3EH
020 8892 8008
stmargaretssales@snellers.co.uk

Energy Rating: We aim to make our particulars both accurate and reliable. However they are not guaranteed; nor do they form part of an offer or contract. If you require clarification on any points then please contact us, especially if you're traveling some distance to view. Please note that appliances and heating systems have not been tested and therefore no warranties can be given as to their good working order