



Rowan Crescent, SW16

£575,000

A three bedroom 1930's style home situated in the throws of Streatham Common. This property further benefits from a double garage following on from an extremely large rear garden.

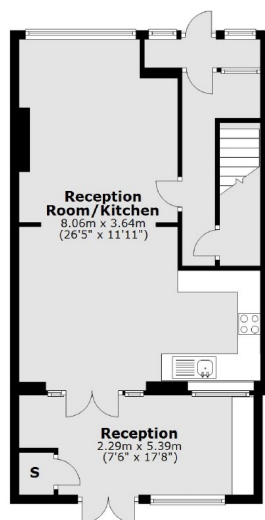
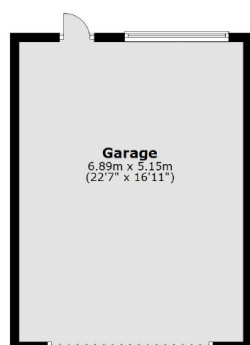
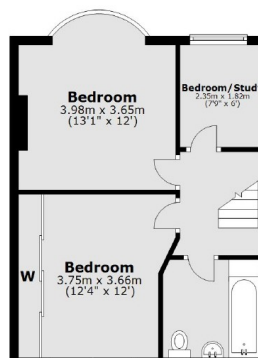
- Three Bedrooms
- Large Garden
- Double Garage
- Good Amenities
- Great Condition
- Scope To Extend



Rowan Crescent is close to Streatham Common train station and many bars, independent coffee shops, restaurants, several large supermarkets, leisure center and a number of good schools.





Ground Floor

First Floor


Main area: Approx. 97.6 sq. metres (1050.7 sq. feet)
Plus garages, approx. 35.5 sq. metres (381.9 sq. feet)

Jacksons Streatham
1-3 De Montfort Parade
Streatham High Road
Streatham
London
SW16 1BU

Energy Rating: D We aim to make our particulars both accurate and reliable. However they are not guaranteed; nor do they form part of an offer or contract. If you require clarification on any points then please contact us, especially if you're traveling some distance to view. Please note that appliances and heating systems have not been tested and therefore no warranties can be given as to their good working order.