



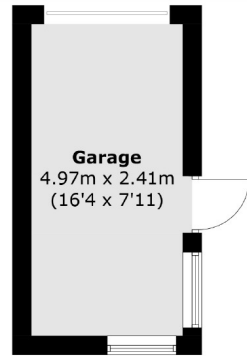
St. Augustines Avenue, W5

£665,000

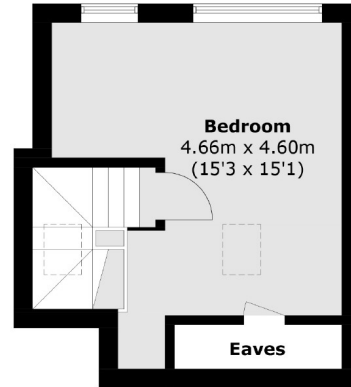
This four bedroom, two bathroom house is on a quiet residential street and has been extended at the rear and into the loft. With two reception rooms, a mature rear garden and garage.

The house is within a mile from both Hanger Lane (Central line) and Alperton (Piccadilly line) stations. The North Circular and A40 are nearby.

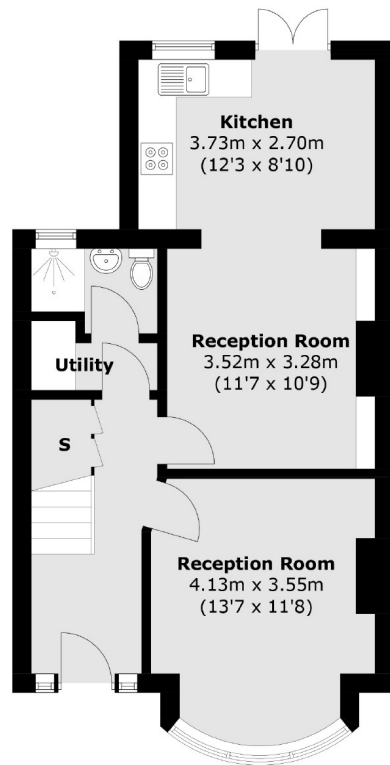
- Four Bedrooms • Two Reception Rooms • Two Bathrooms •
- Garden And Garage • Close To Stations • Residential Road •



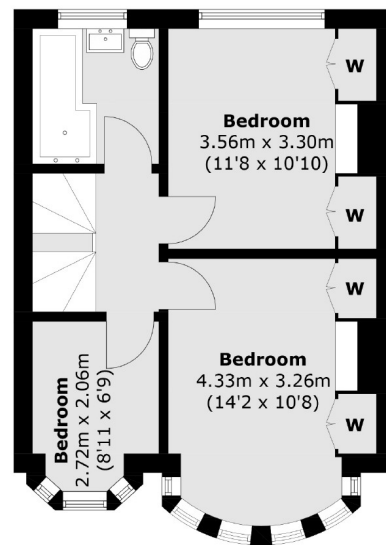
(Not Shown In Actual Location / Orientation)



Second Floor



Ground Floor



First Floor

Total area (approx.): 113.5 sq. m (1,221.7 sq. ft)

Garage: 12.0 sq. m (129.2 sq. ft)

(Excluding Eaves)

Robertson Smith & Kempson Ealing Sales
1 The Broadway, London,
W5 2NT

020 8840 7677

ealingsales@robertsonsmithandkempson.co.uk

Energy Rating: D. We aim to make our particulars both accurate and reliable. However they are not guaranteed; nor do they form part of an offer or contract. If you require clarification on any points then please contact us, especially if you're traveling some distance to view. Please note that appliances and heating systems have not been tested and therefore no warranties can be given as to their good working order.