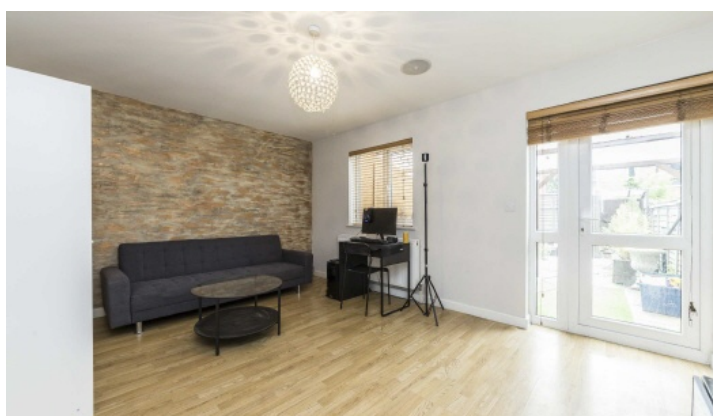


FLETCHERS

ESTATE AGENTS



Arnott Close, W4

£750,000

A two bedroom freehold house with a further office room. The ground floor has a good sized eat-in kitchen and a separate reception which leads out to the private garden. There is further potential to extend into the loft and garden.

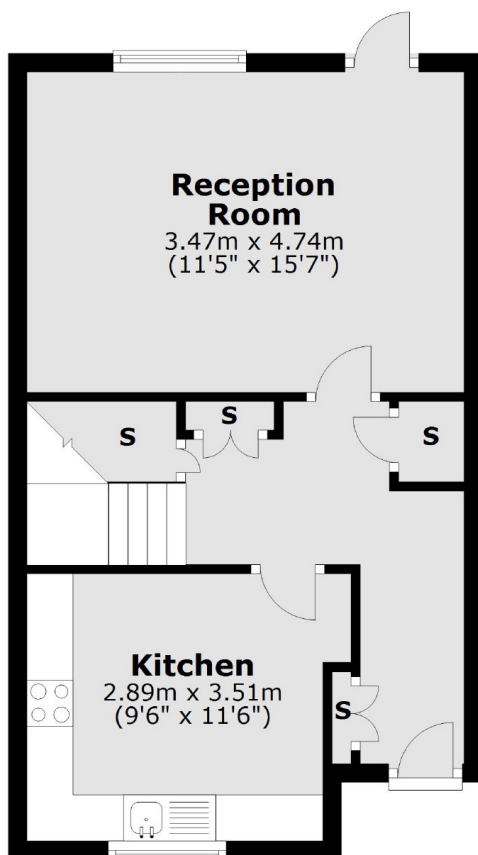
Arnott Close is a central location just North of Chiswick High Road and within easy reach of all of the amenities it has to offer. With Turnham Green and Chiswick Park Stations to chose from as well being a short walk to Belmont Primary School.

- Two Bedrooms • One Office Room • Eat-in Kitchen • Private Garden • Off-Street Paring • Potential to Extend •

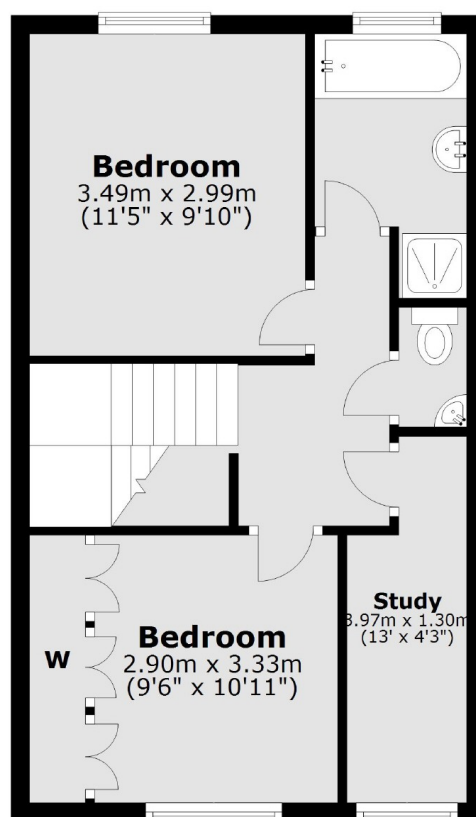
FLETCHERS

ESTATE AGENTS

Ground Floor



First Floor



Total area: approx. 77.8 sq. metres (837.4 sq. feet)

Fletchers Chiswick Turnham Green Sales
58 Turnham Green Terrace, London, W4 1QP
020 8987 3000
chiswicksales@fletcherestates.com

Energy Rating: . We aim to make our particulars both accurate and reliable. However they are not guaranteed; nor do they form part of an offer or contract. If you require clarification on any points then please contact us, especially if you're traveling some distance to view. Please note that appliances and heating systems have not been tested and therefore no warranties can be given as to their good working order.