

ROKSTONE



The Brick, Woodfield Road W9

This beautiful three-bedroom new build mews house is situated within a brand-new development in the thriving community of Westbourne Park. The property is arranged over two floors, comprising of three well-proportioned double bedrooms, three bathrooms, one of them being an en-suite to the principal bedroom and an open plan living and dining area. The open plan living space is coupled with a bespoke fitted kitchen with integrated appliances designed by Miele and Bosch as well as kitchen cabinetry supplied by Wilson Fink. This unique mews house has been meticulously designed to provide residents with a luxury home of the highest specification. The living areas of the house are complimented with underfloor heating and comfort cooling throughout, engineered timber flooring in the living, dining and hallway areas, and remote-controlled LED mood lighting in the kitchen and bathroom.

Measuring at approximately 1,407sqft, the house further benefits from a private patio garden and floor-to-ceiling windows throughout, filling the house with an abundance of natural light.

The Brick development is located in one of London's most desirable neighbourhoods, a stone throw away from Notting Hill, Portobello Road, Westbourne Grove and some of West London's most classic and established destinations, including Portobello Road Market, the Electric Cinema and the popular Notting Hill Fish Shop.

Price £1,695,000



5 Dorset Street London W1U 6QJ

Tel: 020 7580 2030 | Email: enquiries@rokstone.com

<https://www.rokstone.com>

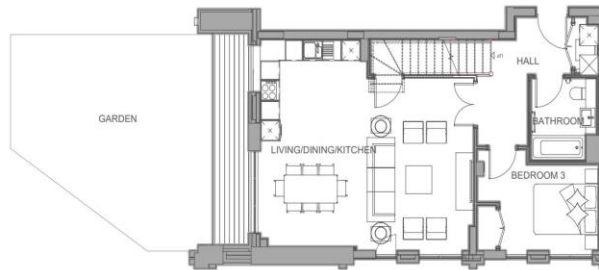
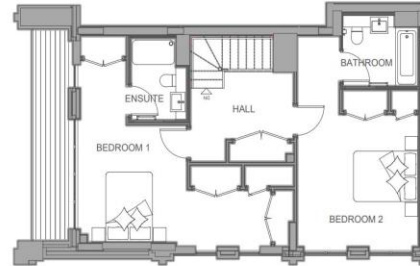
ROKSTONE

THE BRICK

Jekyll Mews 24
(floors 1 & 2)
3 bedrooms



Dimensions	130 M ²	1407 SQ ^{FT}
LIVING/DINING/KITCHEN	6.63m x 5.93m	21'9" x 19'5"
BEDROOM 1	5.95m x 3.37m	19'5" x 11'1"
BEDROOM 2	3.82m x 3.78m	12'6" x 12'5"
BEDROOM 3	3.08m x 2.47m	10'1" x 8'1"



Terms

Local Authority: Westminster City Council

Tenure: Leasehold

Lease: 999 Years Remaining

Service Charge: £6,697.32 PA

Ground Rent: Peppercorn

5 Dorset Street London W1U 6QJ

Tel: 020 7580 2030 | Email: enquiries@rokstone.com

<https://www.rokstone.com>