

# FLETCHERS

ESTATE AGENTS



## Acton Lane, W4

£550,000

This share of freehold apartment is on the first floor of an impressive converted warehouse, with gated off-street parking and lift access. There is a second en suite bathroom, and a large open-plan kitchen/reception room and a private south-facing balcony.

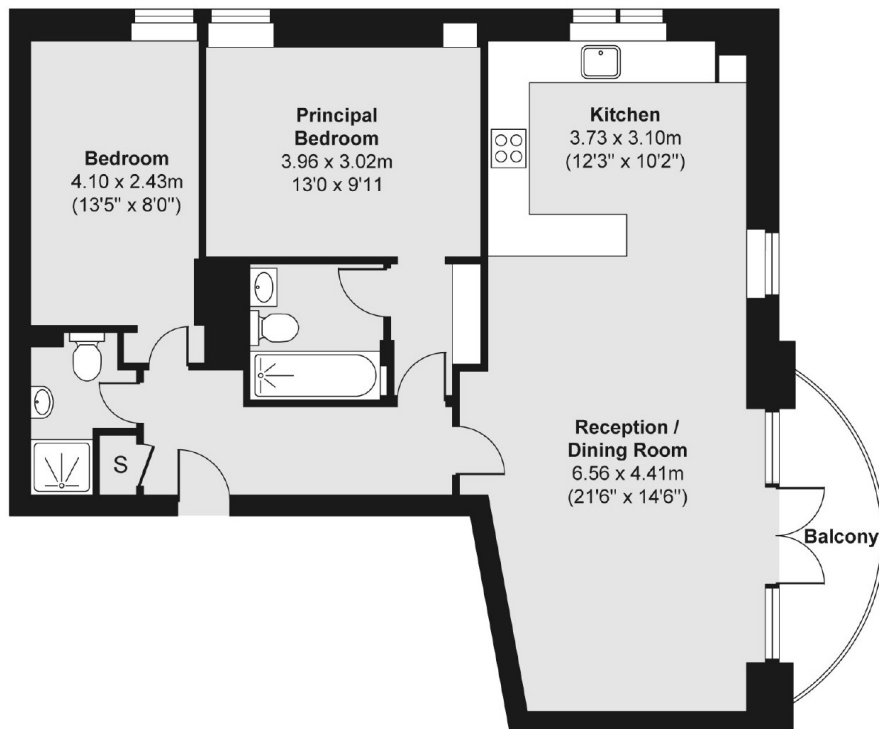
In North Chiswick and within walking distance of Chiswick Park. Chiswick High Road and Turnham Green are within reach and offer a fantastic selection of shops, cafés and restaurants.

- Two Double Bedrooms • Two Bathroom • Large Reception • Private Balcony • Gated Parking • Share of Freehold •

# FLETCHERS

ESTATE AGENTS

First Floor



Total area (approx.) 79.03 sq. m (851 sq. ft)

Balcony area (approx.) 4.90 sq. m (53 sq. ft)

Fletchers Chiswick Turnham Green Sales  
58 Turnham Green Terrace, London, W4 1QP  
020 8987 3000  
[chiswicksales@fletcherestates.com](mailto:chiswicksales@fletcherestates.com)

Energy Rating: . We aim to make our particulars both accurate and reliable. However they are not guaranteed; nor do they form part of an offer or contract. If you require clarification on any points then please contact us, especially if you're traveling some distance to view. Please note that appliances and heating systems have not been tested and therefore no warranties can be given as to their good working order.