

FLETCHERS

ESTATE AGENTS



Sutton Court Road, W4

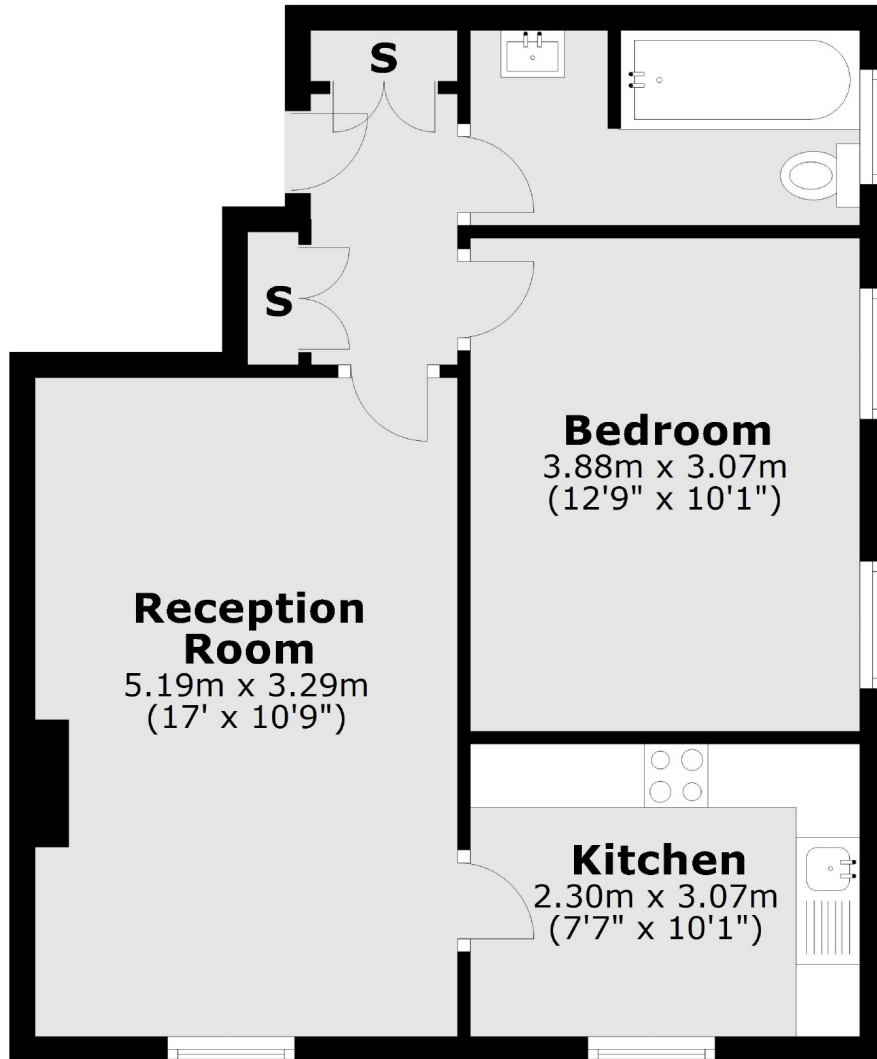
£425,000

A charming one bedroom apartment on the first floor of an attractive Edwardian house. The property has lovely period features, a good sized reception room and a separate kitchen as well as having plenty of storage throughout.

An easy walk up to Chiswick High Road with an abundance of shops, restaurants and cafés as well as Turnham Green Station. Equally, Chiswick Overground Station and the Riverside are walking distance to the South/West.

- One Bedroom • First Floor • Period Features • Separate Kitchen • Good Storage • Share of Freehold •

First Floor



al area: approx. 46.1 sq. metres (495.7 sq. fe

Fletchers Chiswick Turnham Green Sales
58 Turnham Green Terrace, London, W4 1QP
020 8987 3000
chiswicksales@fletcherestates.com

Energy Rating: D. We aim to make our particulars both accurate and reliable. However they are not guaranteed; nor do they form part of an offer or contract. If you require clarification on any points then please contact us, especially if you're traveling some distance to view. Please note that appliances and heating systems have not been tested and therefore no warranties can be given as to their good working order.