

# Chard

— Lettings —



## De Morgan Road, SW6

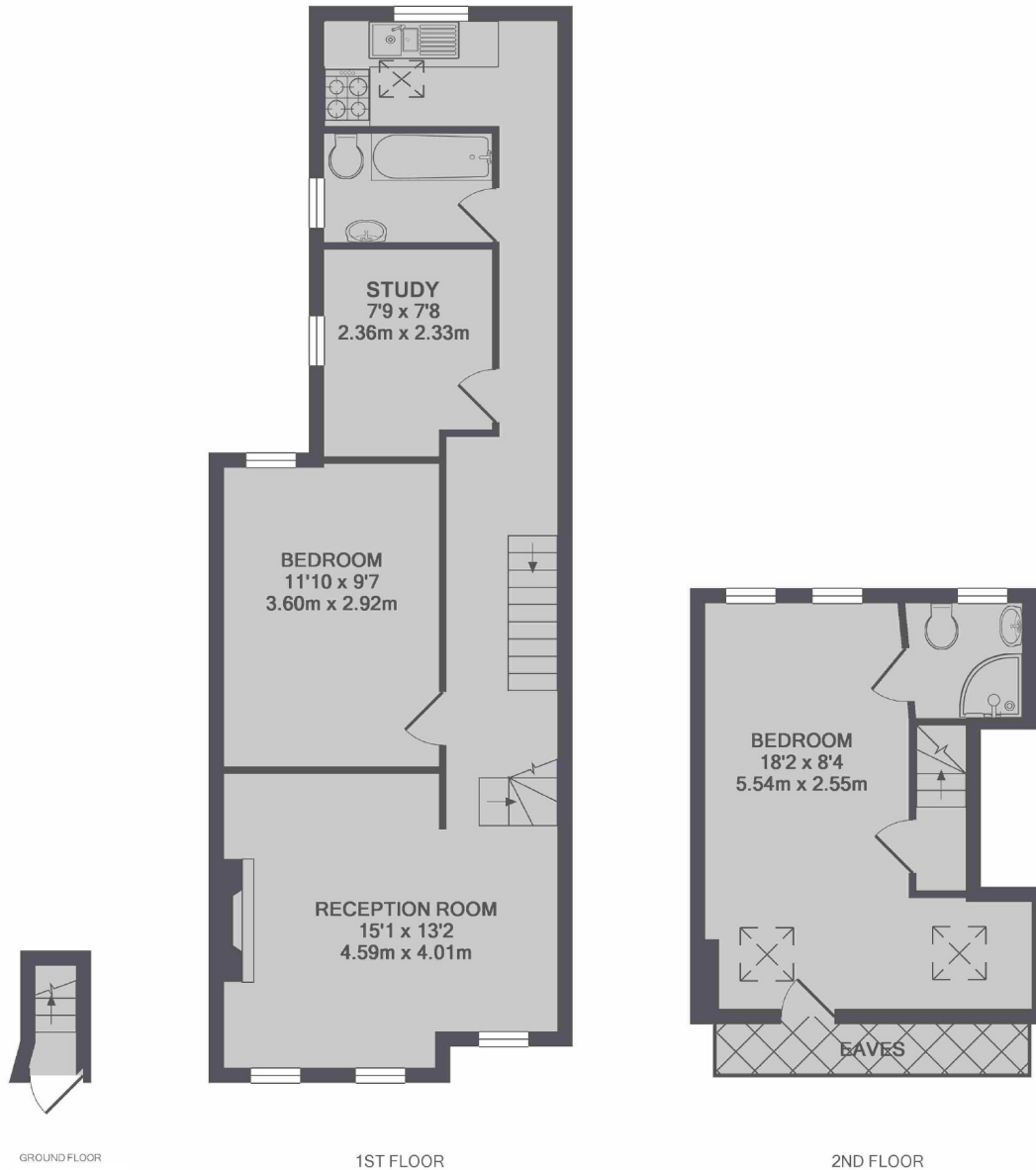
£510 pw (£2,167 pcm)

This two bedroom split-level apartment on the first and second floors of a well-maintained Victorian conversion has a spacious reception room, a separate integrated kitchen, two bathrooms and great storage space throughout.

De Morgan Road is off Wandsworth Bridge Road and Townmead Road, where there are many bus routes leading into Chelsea and the city or, south of the river. The closest stations are Fulham Broadway underground and Imperial Wharf overground. The river taxi is also nearby.

# Chard

Lettings



TOTAL APPROX. FLOOR AREA 856 SQ.FT. (79.5 SQ.M.)

Chard Fulham  
5 Harwood Road,  
London, SW6 4QP  
020 7384 1400  
[fulhamlettings@chard.co.uk](mailto:fulhamlettings@chard.co.uk)

Energy Rating: D. We aim to make our particulars both accurate and reliable. However they are not guaranteed; nor do they form part of an offer or contract. If you require clarification on any points then please contact us, especially if you're traveling some distance to view. Please note that appliances and heating systems have not been tested and therefore no warranties can be given as to their good working order.