

# SNELLERS

ESTATE AGENTS



## St. Margarets Road, TW1

£1,200,000

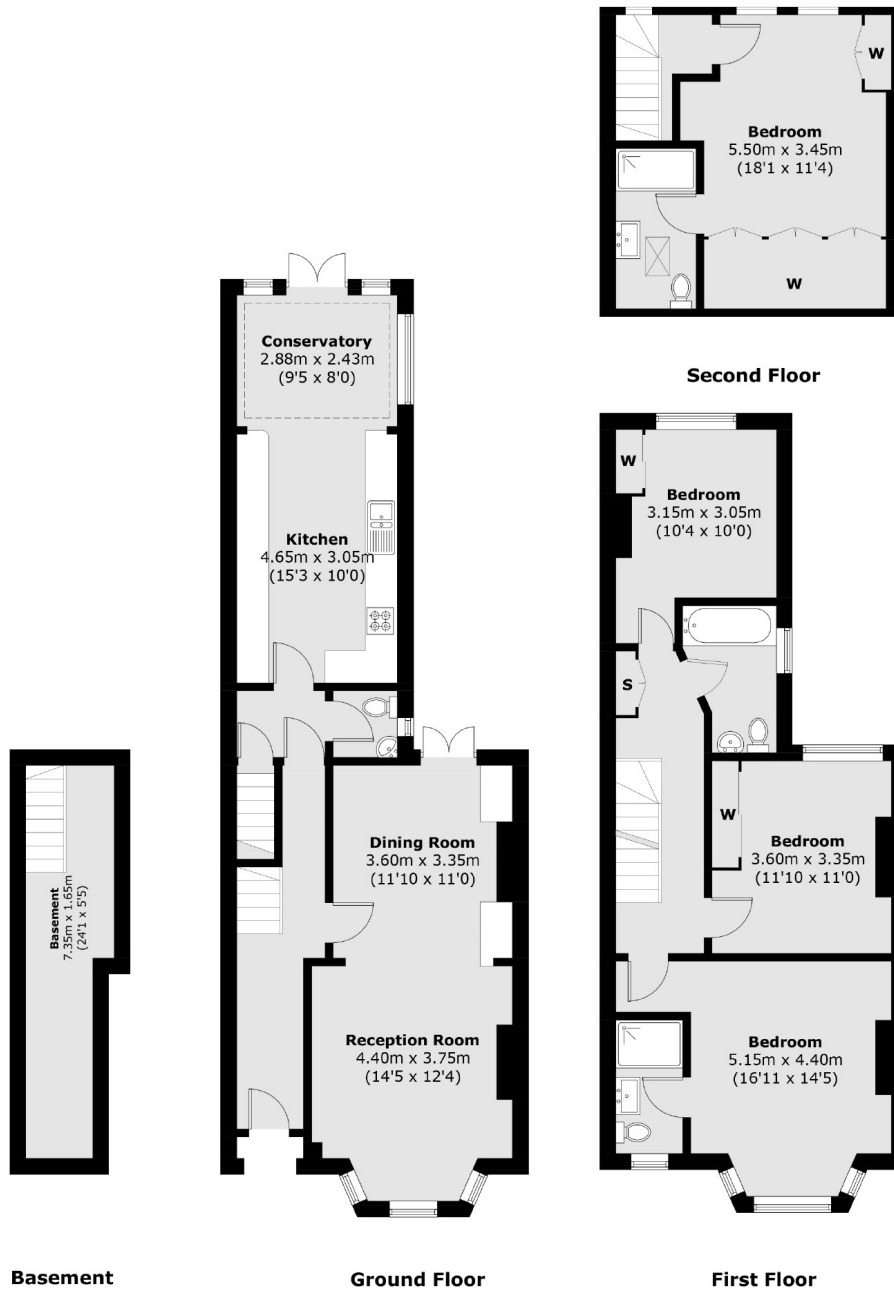
An immaculately presented, four bedroom semi detached Edwardian family home offering in excess of 1,700 sq.ft of living space located on this highly sought after residential road.

St Margarets road is a popular residential road located near to the mainline train service into London Waterloo, and within the catchment of St Stephens Primary School with the added bonus of being moments from the River Thames and its tow path walks into Richmond.

- Edwardian Family Home • Semi Detached • Four Bedrooms •
- Three Bathrooms • Cellar • Landscaped Garden •

# SNELLERS

ESTATE AGENTS



Total area (approx.): 162 sq. m (1,743.5 sq. ft)  
(Including Basement)

Snellers St. Margarets Sales  
36 Crown Road  
St Margarets  
TW1 3EH  
020 8892 8008  
stmargaretssales@snellers.co.uk

Energy Rating: D We aim to make our particulars both accurate and reliable. However they are not guaranteed; nor do they form part of an offer or contract. If you require clarification on any points then please contact us, especially if you're traveling some distance to view. Please note that appliances and heating systems have not been tested and therefore no warranties can be given as to their good working order