

# FLETCHERS

ESTATE AGENTS

---



**Lakeside Road, W14**

**£575,000**

In this prime spot between Brook Green and Shepherds Bush, a well planned garden flat with two double bedrooms, a cosy living room, and direct access to a secluded southerly aspect rear garden.

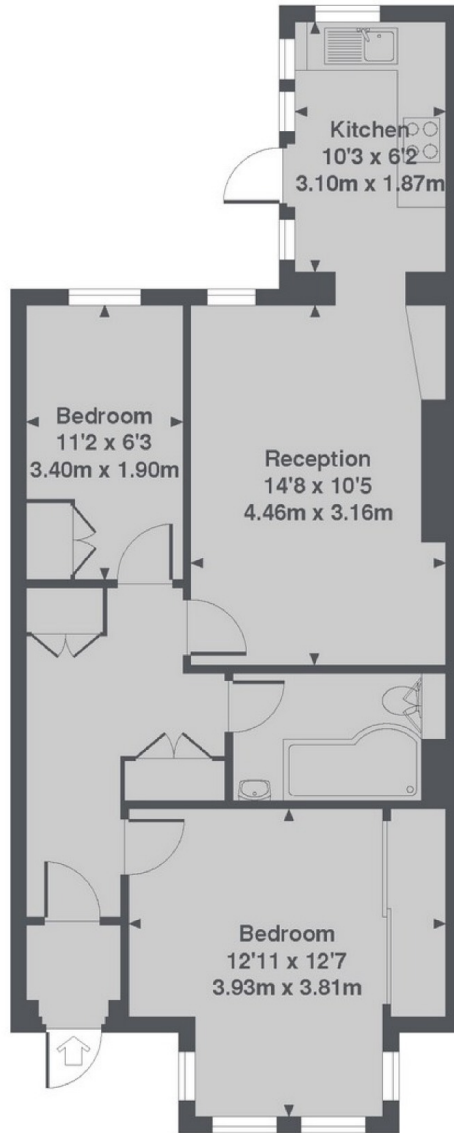


Lakeside Road is lined with handsome bay fronted terraced bay fronted Victorian houses and the flat is approached by its own private entrance. The main bedroom has excellent built in storage, and the living room and kitchen both overlook the private rear garden.

Lakeside Road is within easy reach of a good selection of local shops, cafes and the numerous transport links from Hammersmith Broadway, Shepherds Bush and Kensington Olympia and 0.4 miles from Westfield Shopping Centre.

- Two Double Bedrooms • Bathroom • Reception Room •
- Separate Kitchen • Private Garden • Private Entrance •
- Chain Free •





Lower Ground Floor

Lakeside Road, W14

Total Approx. Floor area 595 Sq. Ft. (55.3 Sq. M.)

Fletchers Brook Green Sales  
 142A Shepherds Bush Road  
 London  
 W6 7PB  
 020 7603 1415  
[brookgreensales@fletcherestates.com](mailto:brookgreensales@fletcherestates.com)

Energy Rating: C We aim to make our particulars both accurate and reliable. However they are not guaranteed; nor do they form part of an offer or contract. If you require clarification on any points then please contact us, especially if you're traveling some distance to view. Please note that appliances and heating systems have not been tested and therefore no warranties can be given as to their good working order