

FLETCHERS

ESTATE AGENTS



Earsby Street, W14

£1,100,000

This classic apartment retains an abundance of period features and has lots of light from a dual aspect. There is the rare feature of access to a loft ideal for storage or further potential.

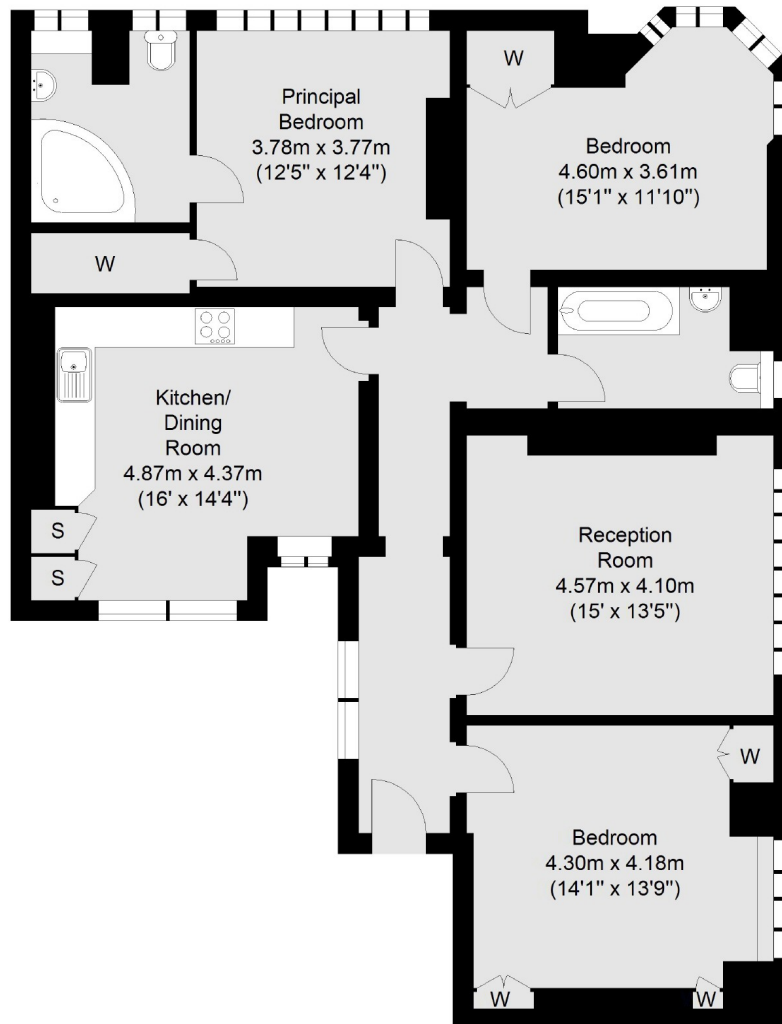
Palace Mansions are in a key position only 300m from Kensington Olympia station (District Line) and only a 10 minute walk Kensington High Street with it's fabulous selection of designer boutiques, quality restaurants and wonderful food retailers.

- Three Double Bedrooms • Two bathrooms (1 E/S) • Large Kitchen
- Diner • Reception Room • Passenger Lift • Concierge •

FLETCHERS

ESTATE AGENTS

Fourth Floor



Internal Area (approx.): 122.9 sq. m (1, 322.9 sq. ft)

Fletchers Chiswick Turnham Green Sales
58 Turnham Green Terrace, London, W4 1QP
020 8987 3000
chiswicksales@fletcherestates.com

Energy Rating: E. We aim to make our particulars both accurate and reliable. However they are not guaranteed; nor do they form part of an offer or contract. If you require clarification on any points then please contact us, especially if you're traveling some distance to view. Please note that appliances and heating systems have not been tested and therefore no warranties can be given as to their good working order.