

FLETCHERS

ESTATE AGENTS



Weston Road, W4

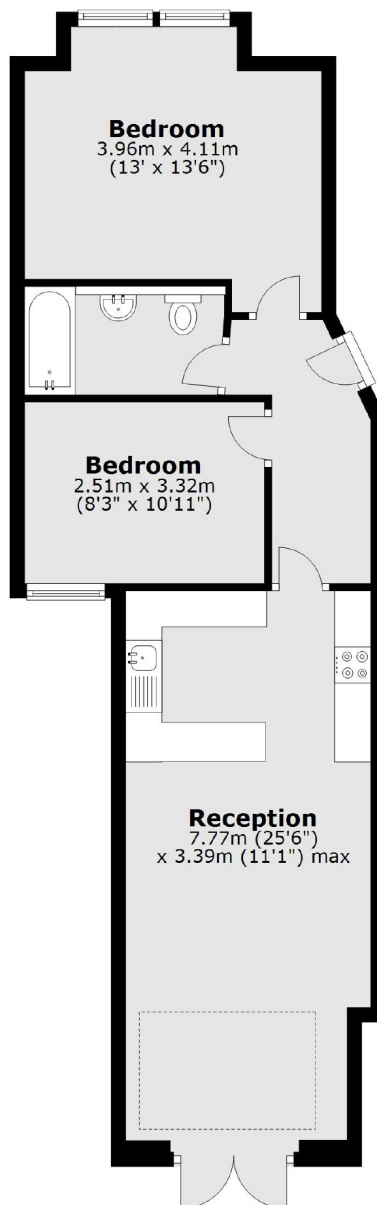
£357 Per week (£1,550 pcm)

This well presented ground floor property offers a bright open-plan living space with a fully integrated kitchen and direct access to a stunning private garden, two double bedrooms and a family size bathroom.

Weston Road is ideally located for the amenities of Chiswick. Chiswick Park Underground Station is close by with District line links into London, and the A4/M4 will allow motorists easy into and out of town routes.

- Two Double Bedrooms • Open-Plan Living • Private Garden • Central Location • Modern Kitchen • Chiswick Park Station •

Ground Floor



Total area: approx. 58.6 sq. metres (630.9 sq. feet)

Fletchers Chiswick High Road Lettings
86 Chiswick High Road, Chiswick, London, W4 1SY
020 8742 4100
chiswicklettings@fletcherestates.com

Energy Rating: . We aim to make our particulars both accurate and reliable. However they are not guaranteed; nor do they form part of an offer or contract. If you require clarification on any points then please contact us, especially if you're traveling some distance to view. Please note that appliances and heating systems have not been tested and therefore no warranties can be given as to their good working order.