



Haslemere Avenue, W13

£635,000

Be the first owner of this fantastic split level maisonette which offers better accommodation than many houses locally.

The developer has successfully combined period features with a contemporary finish which is ready for a purchaser to move in and enjoy straight away.



This is one of just four newly converted maisonettes in this street, the building looks very smart at front. Laid out over three floors to create a living space of over 1000 Sq.Ft that compares favourably to many houses in the area and benefits from off street parking.

Private entrance door to the hallway with staircase to the first floor. You come up to the eye catching open plan kitchen/living room which has a lot of features to go with the high spec kitchen, there is a double bedroom with a balcony over looking Haslemere allotments and the main bathroom with jacuzzi bath, on the upper floor there are two further double bedrooms including the principal bedroom with Juliet balcony and en suite shower room.

We love the fact that some period features have been added to the contemporary features to create a wonderful home to enjoy for years to come.

- Maisonette • Split Level • Long Lease •
 - Off Street Parking • Close To Shops • Good Transport Links •
-



Haslemere Avenue

Approximate Gross Internal Area = 84.4 sq m / 909 sq ft
(Excluding Reduced Headroom)
Reduced Headroom = 10.5 sq m / 113 sq ft
Total = 94.9 sq m / 1022 sq ft

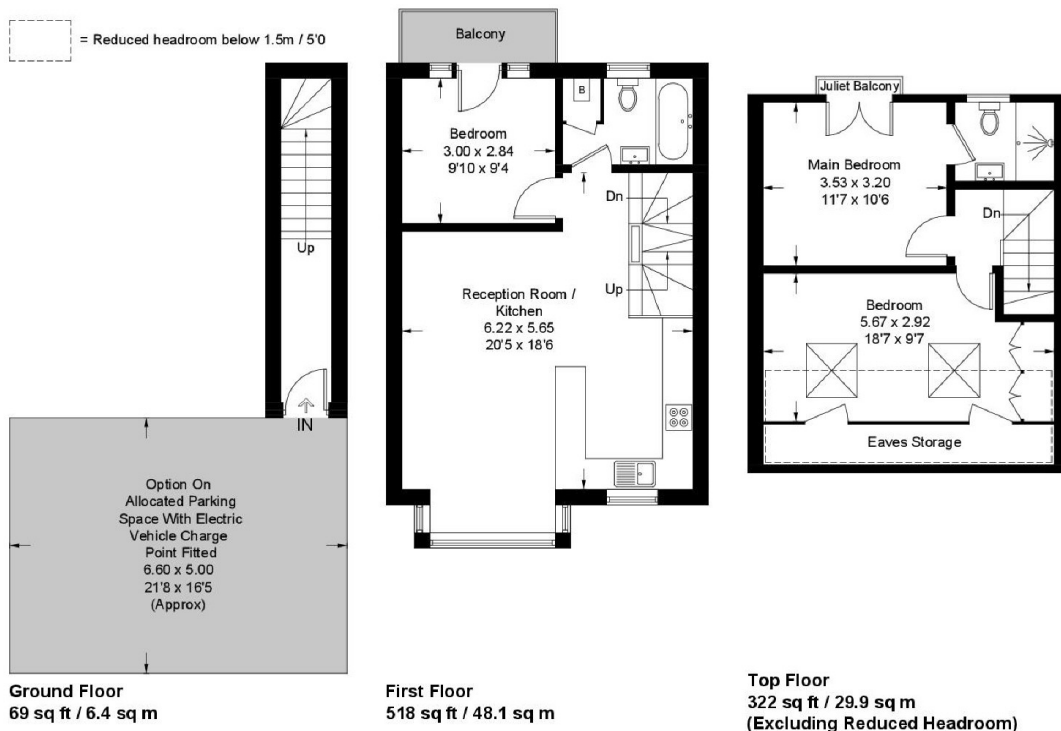


Illustration for identification purposes only, measurements are approximate, not to scale. floorplansUsketch.com © (ID708562)

Robertson Smith & Kempson Northfields Sales
116 Northfield Avenue,
London, W13 9RT
020 8566 2340
northfieldssales@robertsonsmithandkempson.co.uk

Energy Rating: C. We aim to make our particulars both accurate and reliable. However they are not guaranteed; nor do they form part of an offer or contract. If you require clarification on any points then please contact us, especially if you're traveling some distance to view. Please note that appliances and heating systems have not been tested and therefore no warranties can be given as to their good working order.