



Woodstock Avenue, W13

£975,000

This four bedroom Edwardian house enjoys a corner position in the heart of Northfields.

Many benefits include the rear garage which is easily accessed from Mervyn Road.



This four bedroom Edwardian house is set on a prominent corner position on the south side of this Northfields street.

The entrance hall leads through to the bay windowed front reception room with feature fireplace and ornate cornice, you then flow through to the open plan kitchen/dining room which has double doors to the garden letting in lots of natural light. Off the kitchen there is a useful utility area and a downstairs wc.

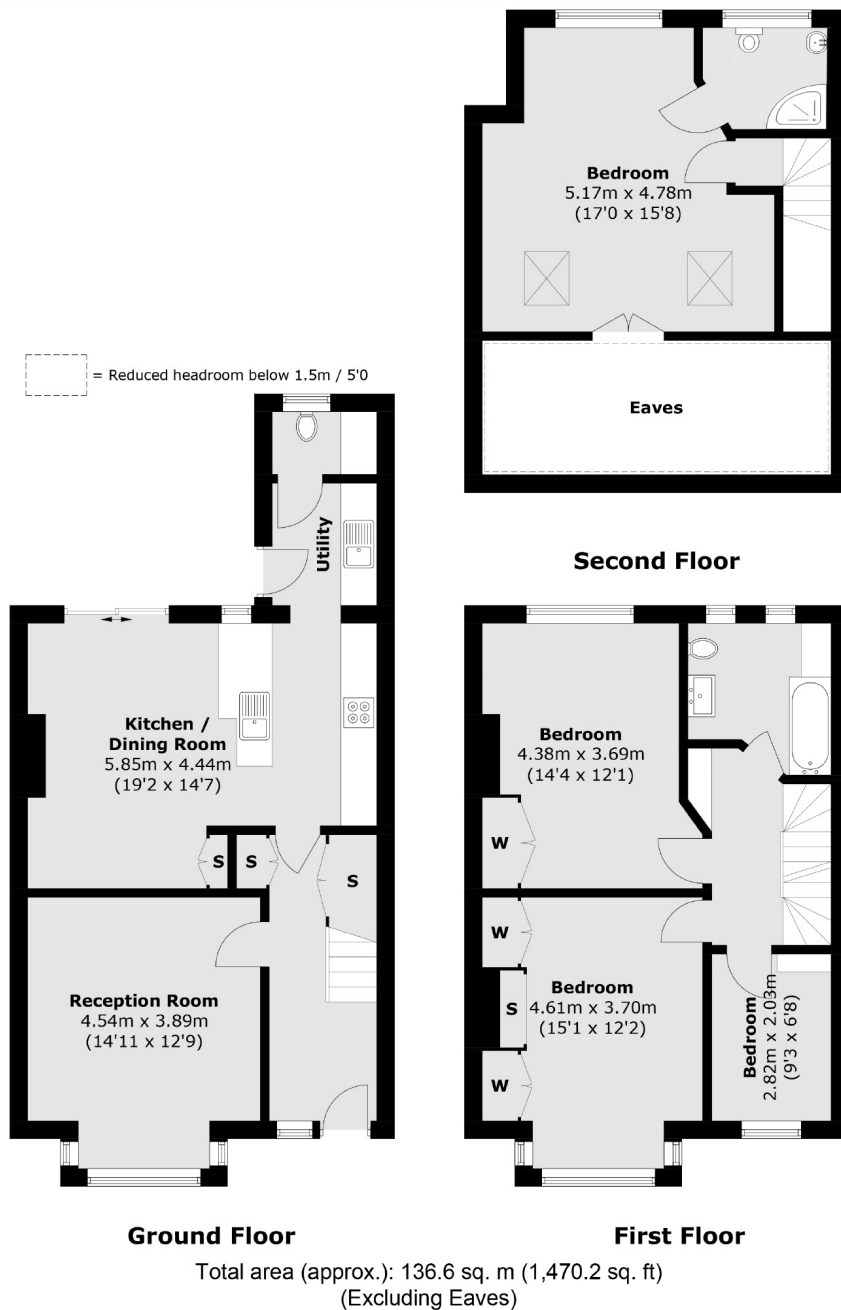
The four bedrooms and bathroom are laid out over the two upper floors.

The corner position makes this a particularly bright house and the benefit of having an easy accessible garage at the end of the garden.

Situated in arguably the best spot in Northfields close to Ofsted outstanding schools and within walking distance of local shops, Lammas Park and Piccadilly line tube on Northfield Avenue with Crossrail within reach at West Ealing.

- Edwardian House • Garage • South Facing Garden •
- Corner Position • Good Transport Links • Well Positioned For Ofsted Outstanding Schools •





Robertson Smith & Kempson Northfields Sales
116 Northfield Avenue,
London, W13 9RT
020 8566 2340
northfieldssales@robertsonsmithandkempson.co.uk

Energy Rating: E. We aim to make our particulars both accurate and reliable. However they are not guaranteed; nor do they form part of an offer or contract. If you require clarification on any points then please contact us, especially if you're traveling some distance to view. Please note that appliances and heating systems have not been tested and therefore no warranties can be given as to their good working order.