



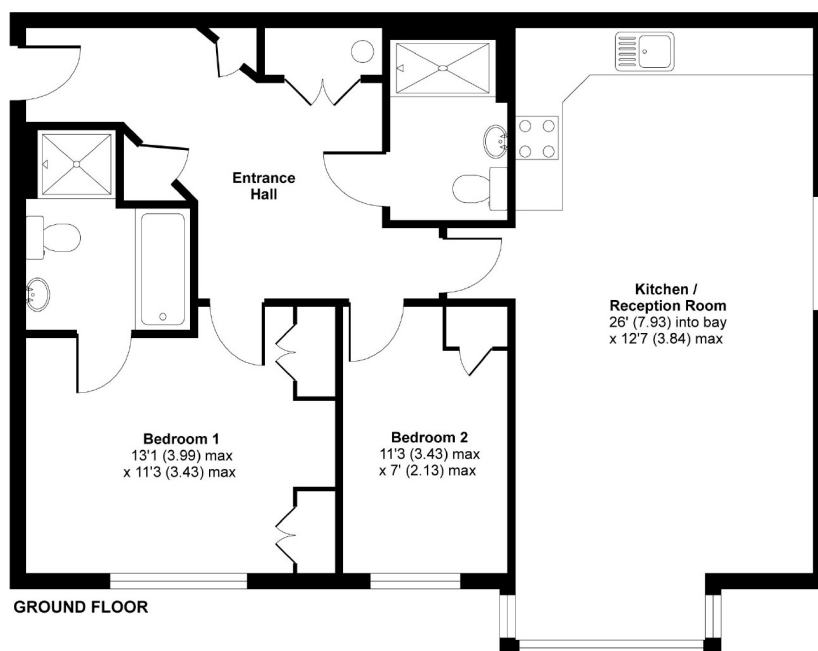
## Balham High Road, SW17

**£1,850 PCM**

A lovely two bedroom, two bathroom apartment situated in the heart of Balham. This property would be perfect for a professional couple or sharers.

- Gated development
- Reception Room
- Two Bedrooms
- Two Bathrooms
- Private Parking
- Close To Station

For further information on the costs associated with renting a property, please pop into our office or visit our website.



APPROX. GROSS INTERNAL FLOOR AREA 799 SQFT / 74.2 SQM

Lumiere Court, Balham High Road, SW127

Copyright nichecom.co.uk 2008 Produced for Jacksons the Independent Estate Agents REF : LE080000120

Jacksons Balham  
8-11 Balham Station Road  
London  
SW12 9SG  
020 8675 6565  
balham.lettings@jacksonsestateagents.com

Energy Rating: C We aim to make our particulars both accurate and reliable. However they are not guaranteed; nor do they form part of an offer or contract. If you require clarification on any points then please contact us, especially if you're traveling some distance to view. Please note that appliances and heating systems have not been tested and therefore no warranties can be given as to their good working order.