

Chard

Lettings



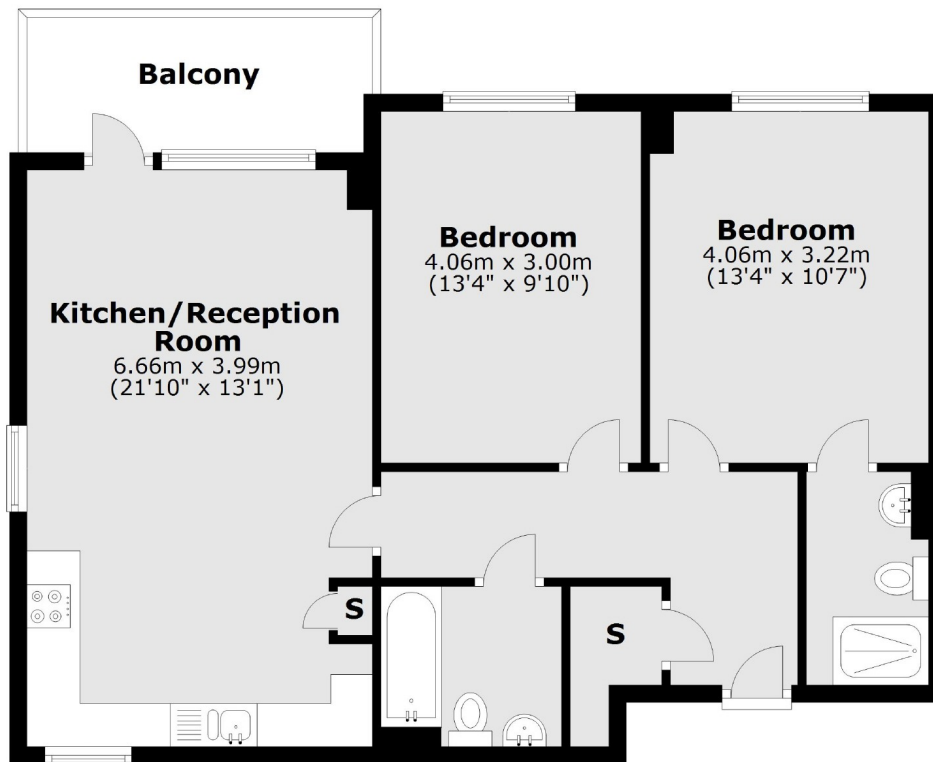
Farm Lane, SW6

£495 pw (£2,145 pcm)

This two double bedroom apartment consists of an open-plan living area and two bathrooms. The flat also has a private balcony and is located in central Fulham.

Fulham Broadway has a wide range of local amenities, restaurants and cafés. Fulham Broadway station (District line) is also close by in addition to excellent bus routes leading into the city, Hammersmith and Wandsworth.

- Two Bedrooms • Two Bathrooms • Open-Plan Living •
- Private Balcony • Modern Block • Centrally Located •



Second Floor

Total area: approx. 71.0 sq. metres (764.1 sq. feet)

Chard Fulham
5 Harwood Road,
London, SW6 4QP
020 7384 1400
fulhamlettings@chard.co.uk

Energy Rating: . We aim to make our particulars both accurate and reliable. However they are not guaranteed; nor do they form part of an offer or contract. If you require clarification on any points then please contact us, especially if you're traveling some distance to view. Please note that appliances and heating systems have not been tested and therefore no warranties can be given as to their good working order.