

SNELLERS

ESTATE AGENTS



Park Road, KT1

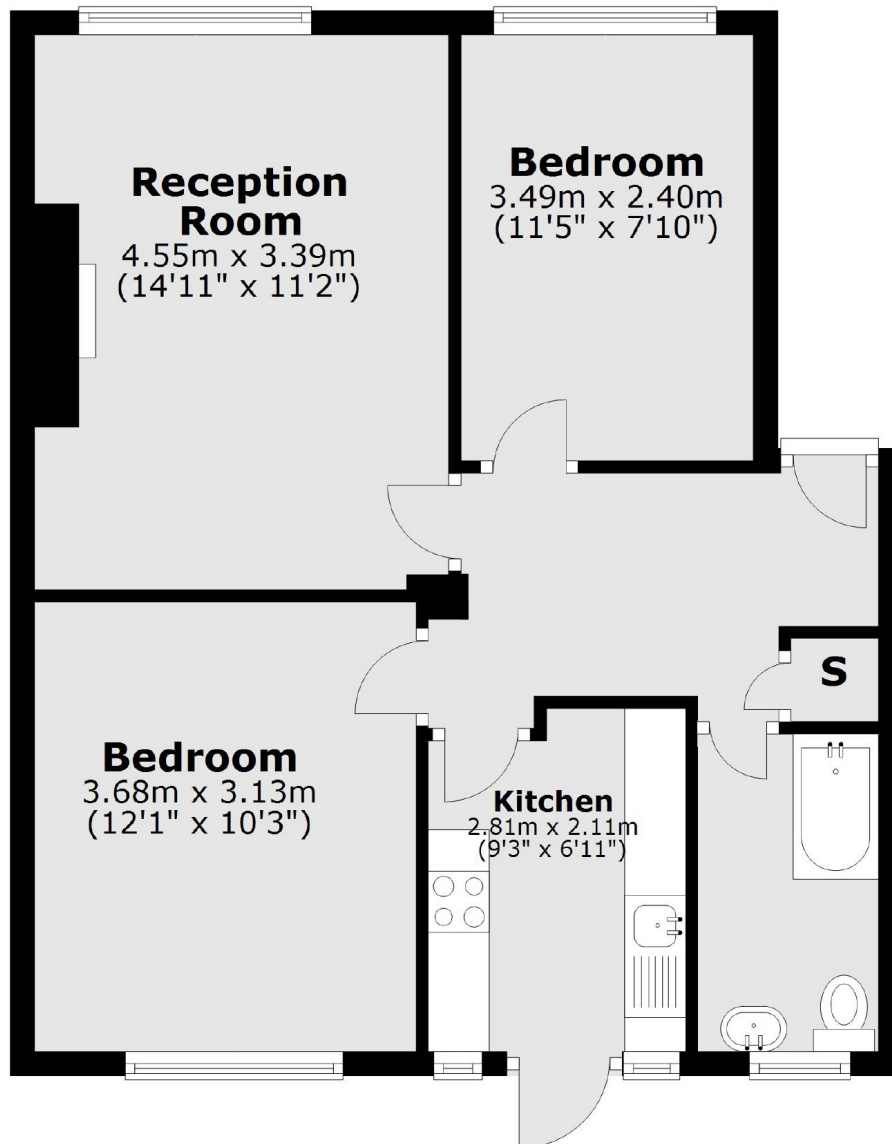
£399,950

A light and airy ground floor two double bedroom apartment forming part of an extremely popular development close to Bushy Park. The apartment offers almost 600 sq ft of living space and has direct access to lovely communal gardens.

The apartment is situated in a popular cul-de-sac opposite access to Royal Bushy Park. Hampton Wick station is just 400m away and Kingston town centre with its fantastic shops and restaurants just a little further.

- Large Reception Room • Fitted Kitchen • Two Double Bedrooms •
- Bathroom • Communal Gardens • Residents Parking •

Ground Floor



Total area: approx. 53.9 sq. metres (580.4 sq. feet)

Snellers Teddington Sales
74 Broad Street
Teddington
TW11 8QX
020 8408 8040
teddingtonsales@snellers.co.uk

Energy Rating: D We aim to make our particulars both accurate and reliable. However they are not guaranteed; nor do they form part of an offer or contract. If you require clarification on any points then please contact us, especially if you're traveling some distance to view. Please note that appliances and heating systems have not been tested and therefore no warranties can be given as to their good working order