



Regency Mews, TW7

£435,000

Offered to the market with no onward chain is this three bedroom family home situated in a quiet cul-de-sac on the Whitton/Isleworth borders.

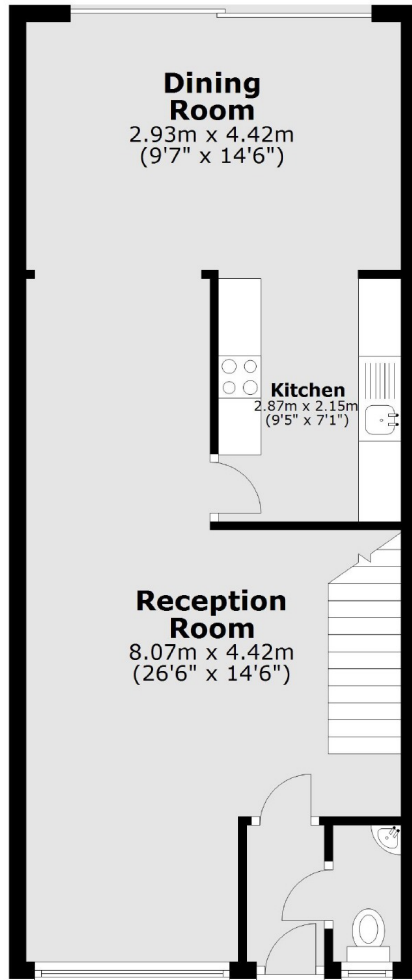
Regency Mews is conveniently located on the Whitton/Isleworth borders set in an exclusive development within easy reach of great local schools and transport links.

- Family Home • Three Bedrooms • Unmodernised •
- Private Garden • No Chain • Garage •

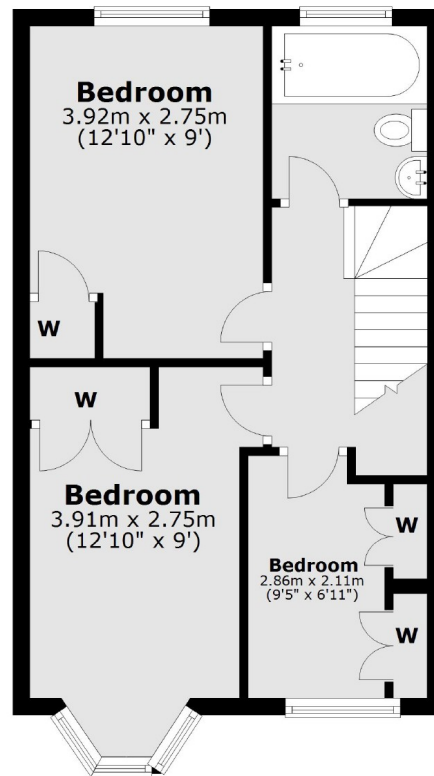
SNELLERS

ESTATE AGENTS

Ground Floor



First Floor



Total area: approx. 86.7 sq. metres (933.7 sq. feet)

Snellers St. Margarets Sales
36 Crown Road
St Margarets
TW1 3EH
020 8892 8008
stmargaretssales@snellers.co.uk

Energy Rating: We aim to make our particulars both accurate and reliable. However they are not guaranteed; nor do they form part of an offer or contract. If you require clarification on any points then please contact us, especially if you're traveling some distance to view. Please note that appliances and heating systems have not been tested and therefore no warranties can be given as to their good working order