



Harborough Road, SW16

£2,000 PCM

A well presented two bedroom ground floor Victorian maisonette with a large kitchen breakfast room and a private garden.

- Ground Floor Flat
- Two Large Bedrooms
- Kitchen Breakfast Room
- Spacious Throughout
- Private Garden
- Part Furnished

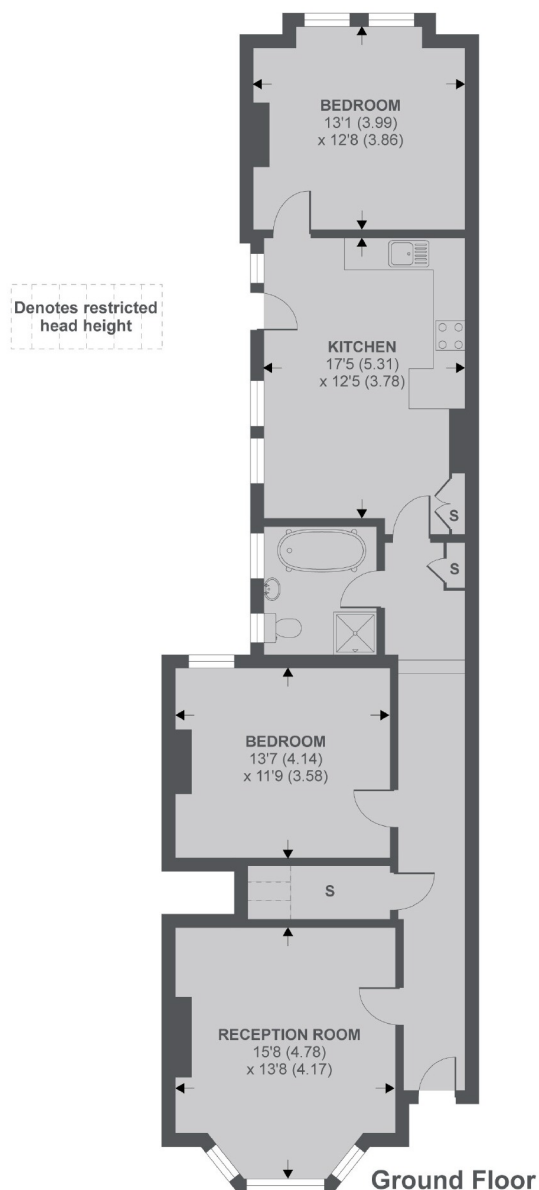
For further information on the costs associated with renting a property, please pop into our office or visit our website.



The property offers fantastic space and modern living, suitable for a couple or two sharers.

Harborough Road is a quiet tree lined road situated within easy reach of both Streatham Hill and Streatham train stations, as well as the wide variety of shops, bars and restaurants along The High Road.





APPROX FLOOR AREA 1013 SQ.FT 94.1 SQ.M (INCLUDES RESTRICTED HEAD HEIGHT)

Copyright nichecom.co.uk 2019 REF : 489015

Jacksons Streatham
1-3 De Montfort Parade
Streatham High Road
Streatham
London
SW16 1BU

Energy Rating: D We aim to make our particulars both accurate and reliable. However they are not guaranteed; nor do they form part of an offer or contract. If you require clarification on any points then please contact us, especially if you're traveling some distance to view. Please note that appliances and heating systems have not been tested and therefore no warranties can be given as to their good working order.