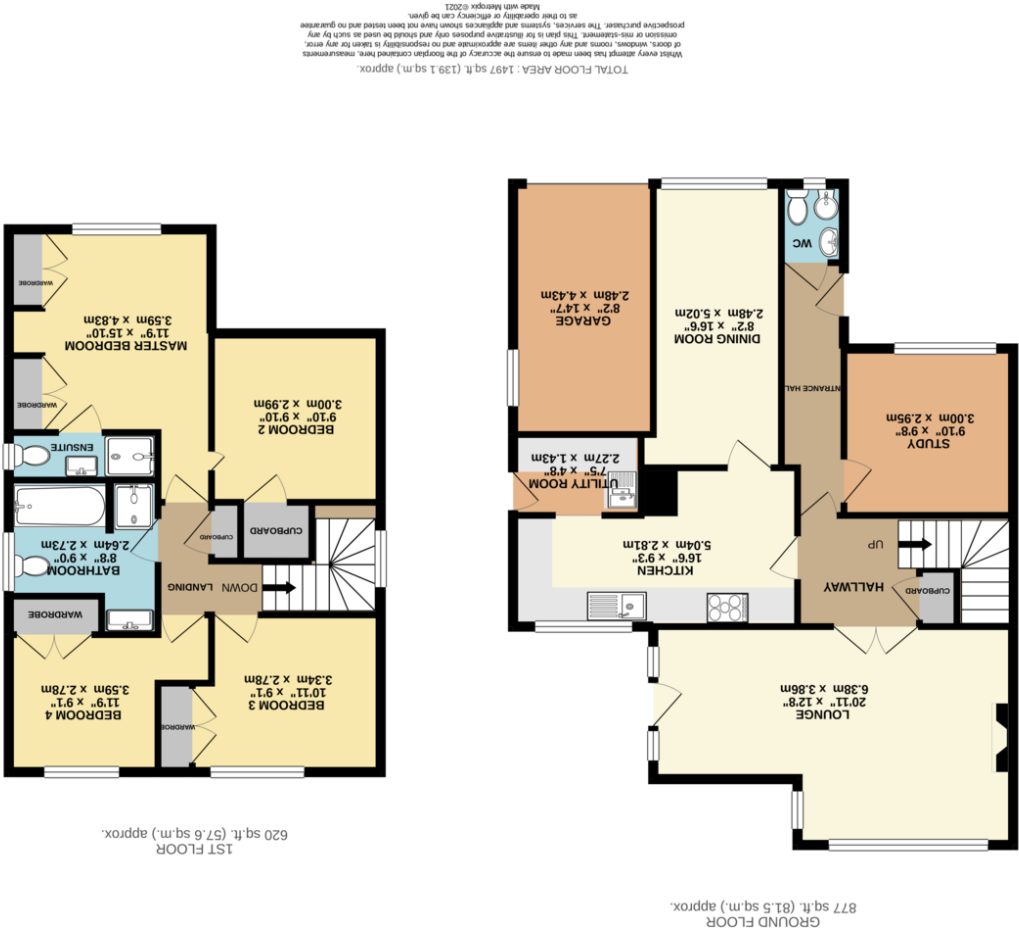
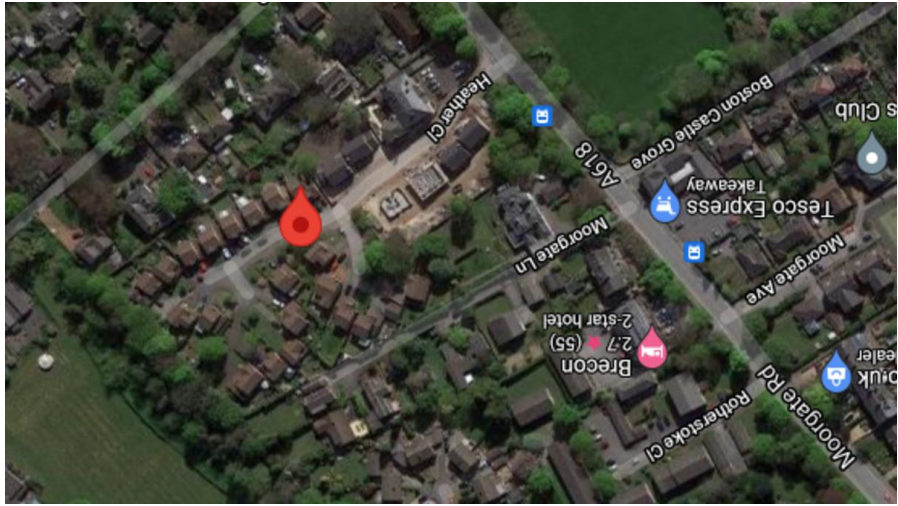




2 Heather Close, Moorgate, Rotherham, S60 2TQ



2 Heather Close, Moorgate, S60 2TQ

Guide Price £365,000-£375,000
Situating upon a No Through Road immediately off Moorgate Road & very close to Oakwood School & Thomas Rotherham 6th Form College, is this deceptively spacious 4 bedroom detached family home with En suite to the Principal bedroom.
Formerly the Vicarage, this family home enjoys spacious living areas with a separate dining room, study/playroom & an 'L' shape Lounge with door giving access to the rear garden.
The kitchen is fitted with a comprehensive range of units with integrated dishwasher & a utility room leading off. A ground floor WC is always a welcome!
To the 1st floor are 4 good size bedrooms along with a 4 piece family bathroom suite inc. a separate shower cubicle.
Fronting is a double side by side driveway leading to the single garage & with a small front lawn garden & rear enclosed garden.
Open spaces of Boston Park are within a 5 minute walk & the M1 motorway & Sheffield Parkway approx. 3 miles away.

- A 4 bedroom detached home
- Situated upon a No Through Road
- En suite facilities to Principal bedroom
- Single garage
- Very close to Oakwood School & 6th form College
- 3 reception rooms
- Downstairs toilet
- Utility Room
- Rear enclosed lawned garden & patio
- Approximately 2 miles to Rotherham Town Centre

