

FLETCHERS

ESTATE AGENTS



Sulgrave Road, W6

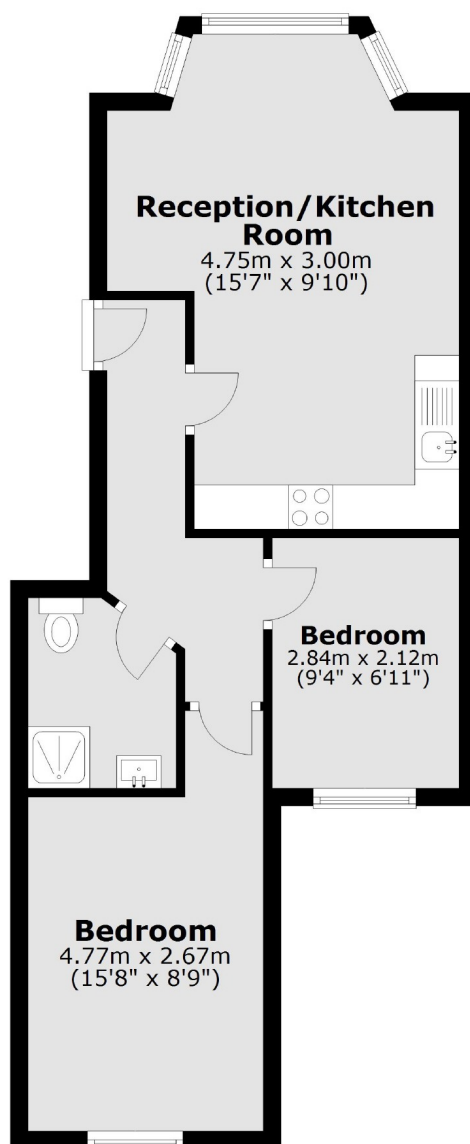
£346 Per week (£1,499 pcm)

A modern two bedroom apartment on Sulgrave Road. The property is on the ground floor of a period conversion and has an open-plan kitchen/reception and wooden floors throughout.

Sulgrave Road is conveniently located between Shepherds Bush and Hammersmith for easy access to local amenities and Westfield Shopping Centre.

- Two Bedrooms • Reception Room • Brook Green • Open-Plan Kitchen • Furnished • Wooden Floors •

Ground Floor



Total area: approx. 44.9 sq. metres (483.8 sq. feet)

Fletchers Brook Green Lettings
142A Shepherds Bush Road, London, W6 7PB
020 7603 0603
brookgreenlettings@fletcherstates.com

Energy Rating: E. We aim to make our particulars both accurate and reliable. However they are not guaranteed; nor do they form part of an offer or contract. If you require clarification on any points then please contact us, especially if you're traveling some distance to view. Please note that appliances and heating systems have not been tested and therefore no warranties can be given as to their good working order.