

TATES

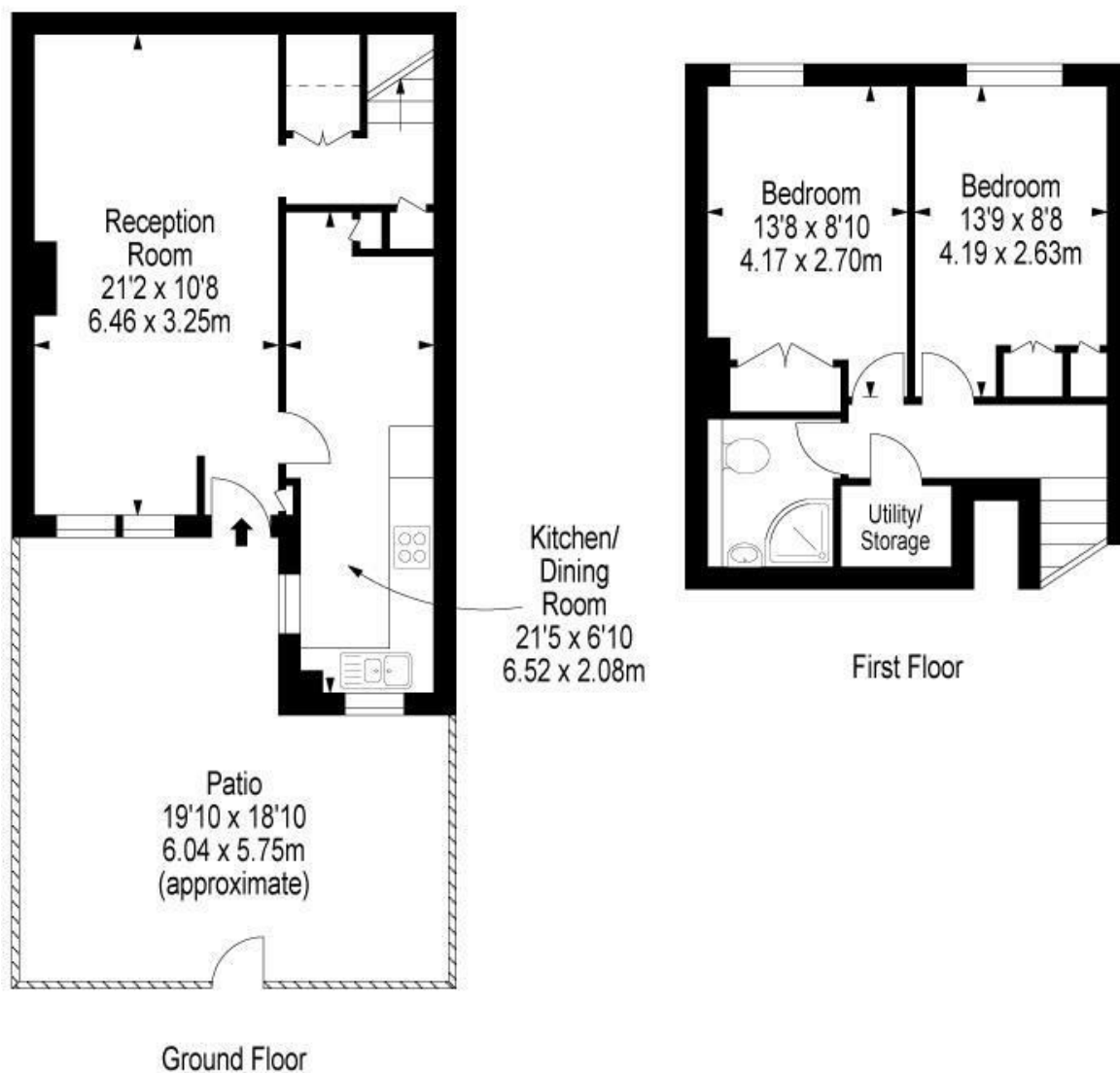
Residential Sales & Lettings



More Close, St Pauls Court, London W14 9BN £1,900 Per month

- Two Double Bedroom
- Hot Water & Heating Inclusive
- Gated Development
- Communal Gardens
- Wood Floor Throughout
- Private Garden
- Unfurnished
- Energy Efficiency Rating Current Band: C

More Close,
St Pauls Court, W14



Approx Gross Internal Area **787 Sq Ft - 73.08 Sq M**

Floor Plan Supplied For Identification Purposes Only And May Not Be Accurate
Floor Plan by www.elegantmediasolution.com

Whilst these particulars are believed to be correct, no guarantee can be given for the measurements, appliances or services. It is our recommendation that all are tested. These are not intended to form part of any contract. Tate's accept no responsibility for their accuracy.

135 Hammersmith Rd London W14 0QL.
T. 020 7602 6020 F. 020 7602 9522
mail@tatesestates.co.uk
tatesestates.co.uk

Tates (Agents) Ltd. Registered in England and Wales No. 2356337
Registered Office: 4th Floor Imperial House, 15 Kingsway London WC2B 6U

Energy Efficiency Rating		Current	Potential
Very energy efficient - lower running costs			
(92 plus) A			
(81-91) B			
(69-80) C		69	73
(55-68) D			
(39-54) E			
(21-38) F			
(1-20) G			
Not energy efficient - higher running costs			
England & Wales		EU Directive 2002/91/EC	

