



Upper Tooting Park, SW17

£1,350,000

A superb five bedroom 1920's semi-detached house with a south-facing garden located in a popular tree lined road within easy reach of Balham, Wandsworth Common and Tooting Bec.

- End of Terrace
- Five Bedrooms
- Edwardian Family Home
- South Facing Garden
- Private Garage
- Open Plan Kitchen



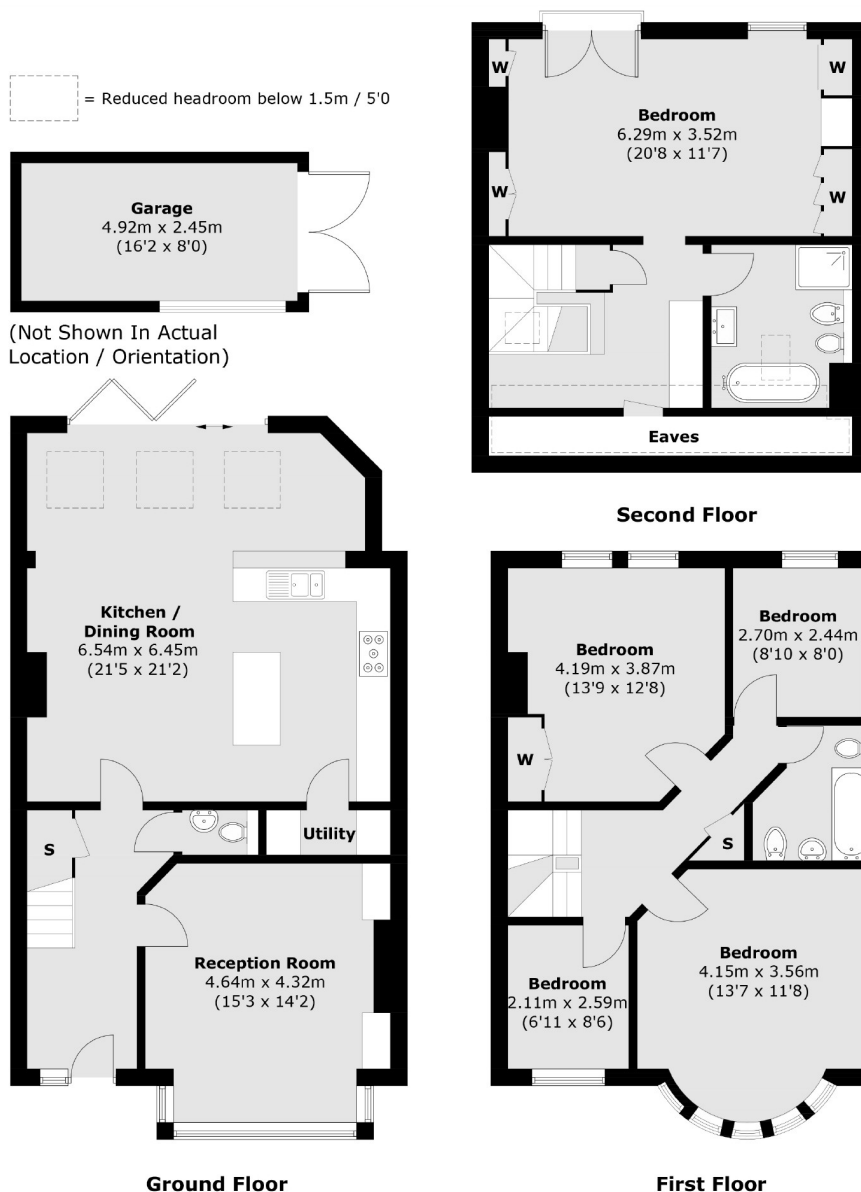
The ground floor comprises a separate reception room with bay window, a spacious living/dining space at the rear with bi-fold doors leading to the landscaped South facing garden and large garage.

On the first floor of the property there are two large double bedrooms, two further single bedrooms and a family bathroom. On the second floor is the master suite with double bedroom overlooking the garden, a dressing room, bathroom and eaves storage.

There are fantastic transport links nearby as Balham train station (National Rail and Northern line underground) is just half a mile away, with Tooting Bec tube station located even closer than that and Wandsworth Common station just a short walk away up St James' Drive. Bellevue Road which has an eclectic mixture of boutique restaurants, shops and bars, and the stunning Wandsworth Common, are also just half a mile away.







Total area (approx.): 177.2 sq. m (1,907.3 sq. ft)
(Excluding Eaves)
Garage: 12.0 sq. m (129.1 sq. ft)

Jacksons Balham
8-11 Balham Station Road
London
SW12 9SG
020 8675 6555
balham.sales@jacksonsestateagents.com

Energy Rating: D We aim to make our particulars both accurate and reliable. However they are not guaranteed; nor do they form part of an offer or contract. If you require clarification on any points then please contact us, especially if you're traveling some distance to view. Please note that appliances and heating systems have not been tested and therefore no warranties can be given as to their good working order.