

FLETCHERS

ESTATE AGENTS



Airedale Avenue, W4

£1,500 Per week (£6,500 pcm)

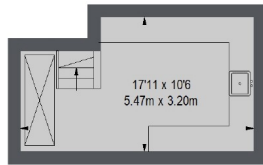
A beautiful family home on one of Chiswick's premier roads with a modern kitchen, a double reception room with period features and high ceilings with doors opening onto a west-facing garden. There are three bath/shower rooms and a cellar in the basement.

Airedale Avenue is ideally located off Chiswick High Road within 0.7 miles of both Turnham Green and Stamford Brook Tube Stations.

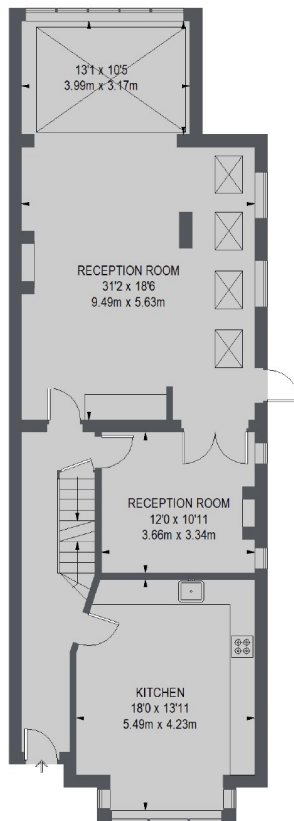
• Six Bedrooms • Large Garden • Modern Kitchen • Modern Bathrooms • Period Features • Chiswick High Road •

FLETCHERS

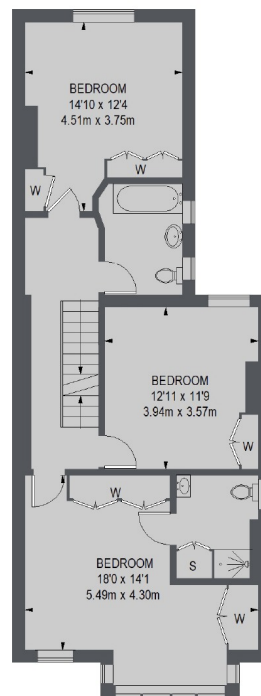
ESTATE AGENTS



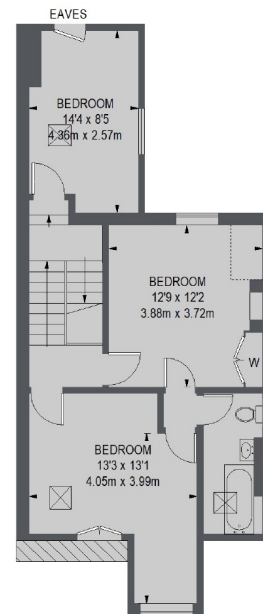
CELLAR



GROUND FLOOR



FIRST FLOOR



SECOND FLOOR

= REDUCED HEADROOM
BELOW 1.5 M / 5'0"

TOTAL APPROX. FLOOR AREA
(EXCLUDING EAVES STORAGE)
2600 SQ. FT. (241.52 SQ. M.)

Fletchers Chiswick Turnham Green Lettings
58 Turnham Green Terrace, London, W4 1QP
020 8742 4100
chiswicklettings@fletcherstates.com

Energy Rating: D. We aim to make our particulars both accurate and reliable. However they are not guaranteed; nor do they form part of an offer or contract. If you require clarification on any points then please contact us, especially if you're traveling some distance to view. Please note that appliances and heating systems have not been tested and therefore no warranties can be given as to their good working order.