



Multi Way, W3

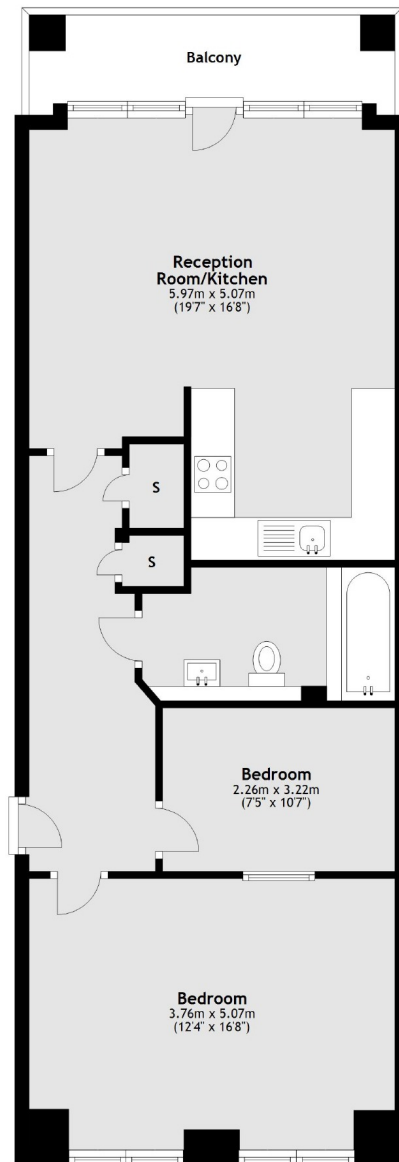
£450,000

A modern apartment on the borders of Chiswick and Shepherds Bush. The property offers almost 800 sq.ft of accommodation with a private balcony overlooking the communal gardens and residents parking.

Watt Court is within half a mile of both Acton Central and Turnham Green stations, offering excellent access into town. There is also an express bus that stops on Larden Road providing an efficient link to Shepherds Bush (Central line).

- Third Floor • Balcony • Modern Bathroom •
- Communal Gardens • Residents Parking • On-Site Porter •

Third Floor



Main area: Approx. 72.4 sq. metres (778.8 sq. feet)
Plus balconies, approx. 6.9 sq. metres (73.9 sq. feet)

Robertson Smith & Kempson Acton Sales
137 High Street, Acton,
London, W3 6LY
020 8896 3996
actonsales@robertsonsmithandkempson.co.uk

Energy Rating: B. We aim to make our particulars both accurate and reliable. However they are not guaranteed; nor do they form part of an offer or contract. If you require clarification on any points then please contact us, especially if you're traveling some distance to view. Please note that appliances and heating systems have not been tested and therefore no warranties can be given as to their good working order.