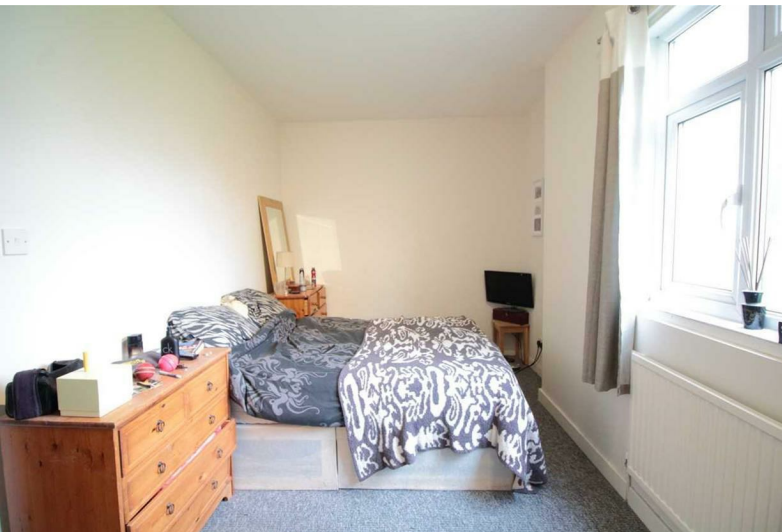


Brixton Hill Court | Brixton Hill, SW2



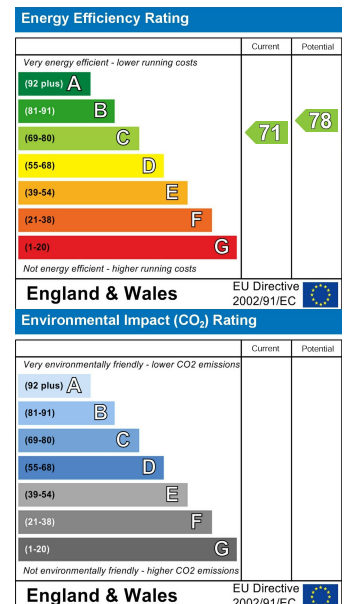
£403 Per Week

- Three bedroom apartment • Popular building • Excellent location • Arranged over 2 floors • Leasehold covenants may apply • On street residents permit parking available on application (TBC)

Brixton Hill Court | Brixton Hill, SW2



OPEN FOR VIEWINGS!* Ideally located a split-level 3 bedroom maisonette in this popular private 1930's lock close to Brixton town centre. Situated at the rear of the building, the flat is surprisingly quiet. It features a big reception room overlooking the communal gardens and a cosy but modern kitchen on the ground floor. Upstairs there are 3 good sized double bedrooms and a modern bathroom. Ideally located within walking distance of Brixton town centre, which is home to Brixton Village, Ritzy Cinema and Brixton Academy as well as various bars and shops. Transport links include Brixton Victoria line tube station, mainline station and numerous buses to the City and West End. Perfect for 3 sharers and available immediately as unfurnished or part furnished. Please note photos were taken prior to the current tenancy. *Following the guidelines, we are open for socially distanced viewings in person. Online viewings are also offered.



These particulars are designed to provide a guideline only and cannot be relied upon as a statement of fact. The description represents the opinion of the author and is not intended to provide false or misleading information. Any prospective purchaser should make further checks on its accuracy. All measurements are approximate and floorplans are for representation only.



Eden Harper
3 Arlington Parade, Brixton Hill, Brixton, SW2 1RH
0207 274 3111
brixsales@edenharper.com
www.edenharper.com