



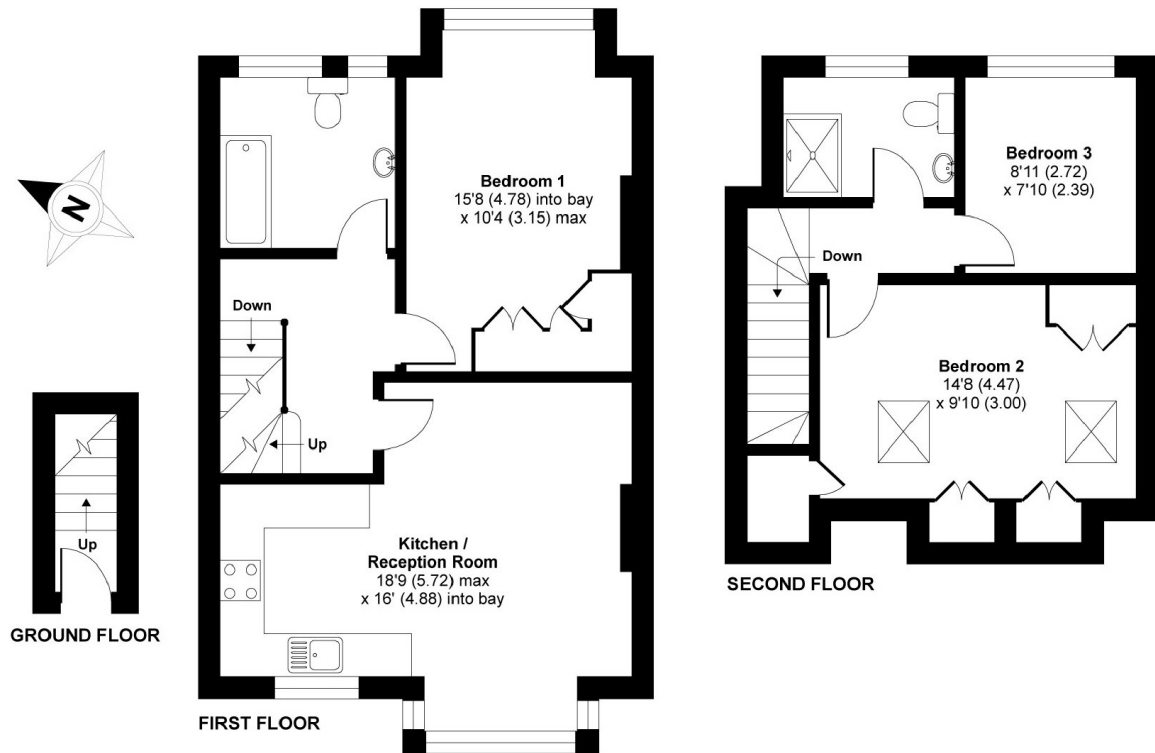
## Balham Park Road, SW12

£2,350 PCM

A beautiful three double bedroom Victorian flat conveniently located for both Balham and Wandsworth Common stations. This property would be ideal for professional sharers.

- Split Level
- Three Bedrooms
- Two Bathrooms
- Modern Fitted Kitchen
- Off Street Parking
- Close to Balham Station

For further information on the costs associated with renting a property, please pop into our office or visit our website.



APPROX. GROSS INTERNAL FLOOR AREA 912 SQ FT 84.7 SQ METRES

Balham Park Road, London, SW12

Copyright nichecom.co.uk 2015 Produced for Jacksons the Independent Estate Agents REF : 68141

Jacksons Balham  
8-11 Balham Station Road  
London  
SW12 9SG  
020 8675 6565  
balham.lettings@jacksonsestateagents.com

Energy Rating: C We aim to make our particulars both accurate and reliable. However they are not guaranteed; nor do they form part of an offer or contract. If you require clarification on any points then please contact us, especially if you're traveling some distance to view. Please note that appliances and heating systems have not been tested and therefore no warranties can be given as to their good working order.