

# SNELLERS

ESTATE AGENTS



## St. Margarets Road, TW1

£495,000

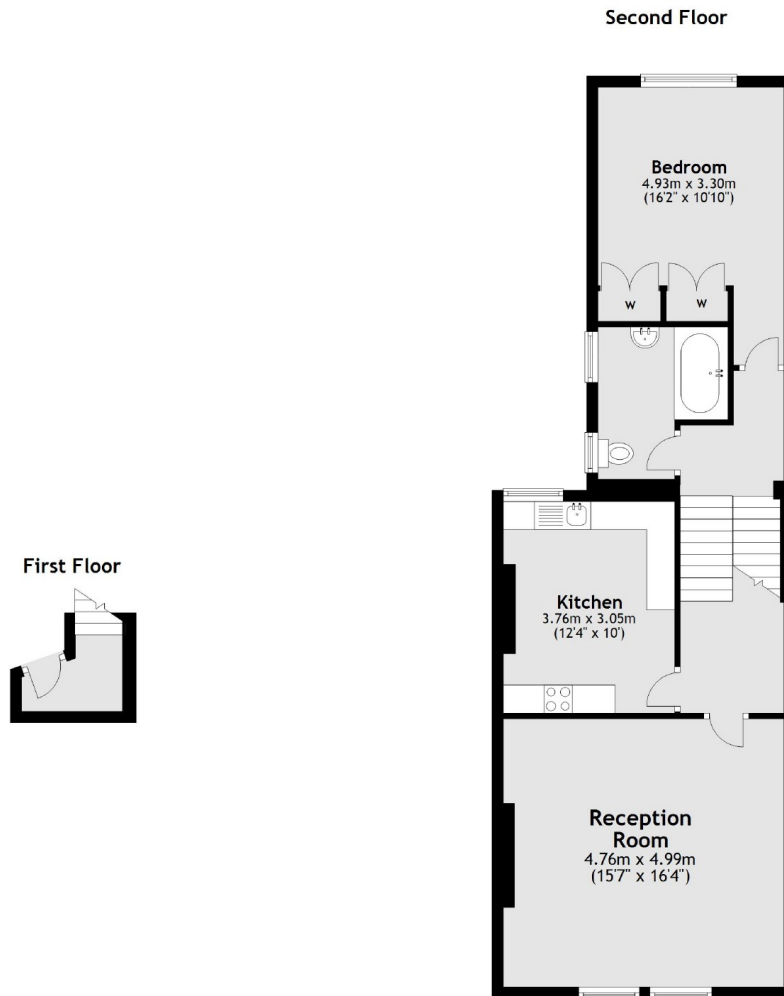
A beautifully presented, large one double bedroom top floor apartment offering in excess of 740 sq.ft of living space enviably located in the heart of St Margarets Village.

St. Margarets Road is ideally situated for bus and train links into Central London with an array of local amenities on its door step and Richmond also located nearby.

- Top Floor • One Double Bedroom • Over 740 sq.ft •
- Excellent Condition • Long Lease • Great Location •

# SNELLERS

ESTATE AGENTS



Total area: approx. 69.2 sq. metres (744.9 sq. feet)

Snellers St. Margarets Sales  
36 Crown Road  
St Margarets  
TW1 3EH  
020 8892 8008  
[stmargaretssales@snellers.co.uk](mailto:stmargaretssales@snellers.co.uk)

Energy Rating: We aim to make our particulars both accurate and reliable. However they are not guaranteed; nor do they form part of an offer or contract. If you require clarification on any points then please contact us, especially if you're traveling some distance to view. Please note that appliances and heating systems have not been tested and therefore no warranties can be given as to their good working order