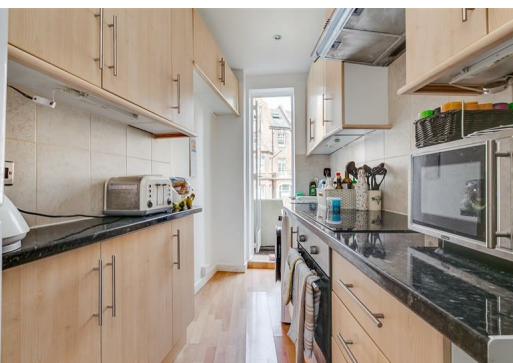


TATES

Residential Sales & Lettings

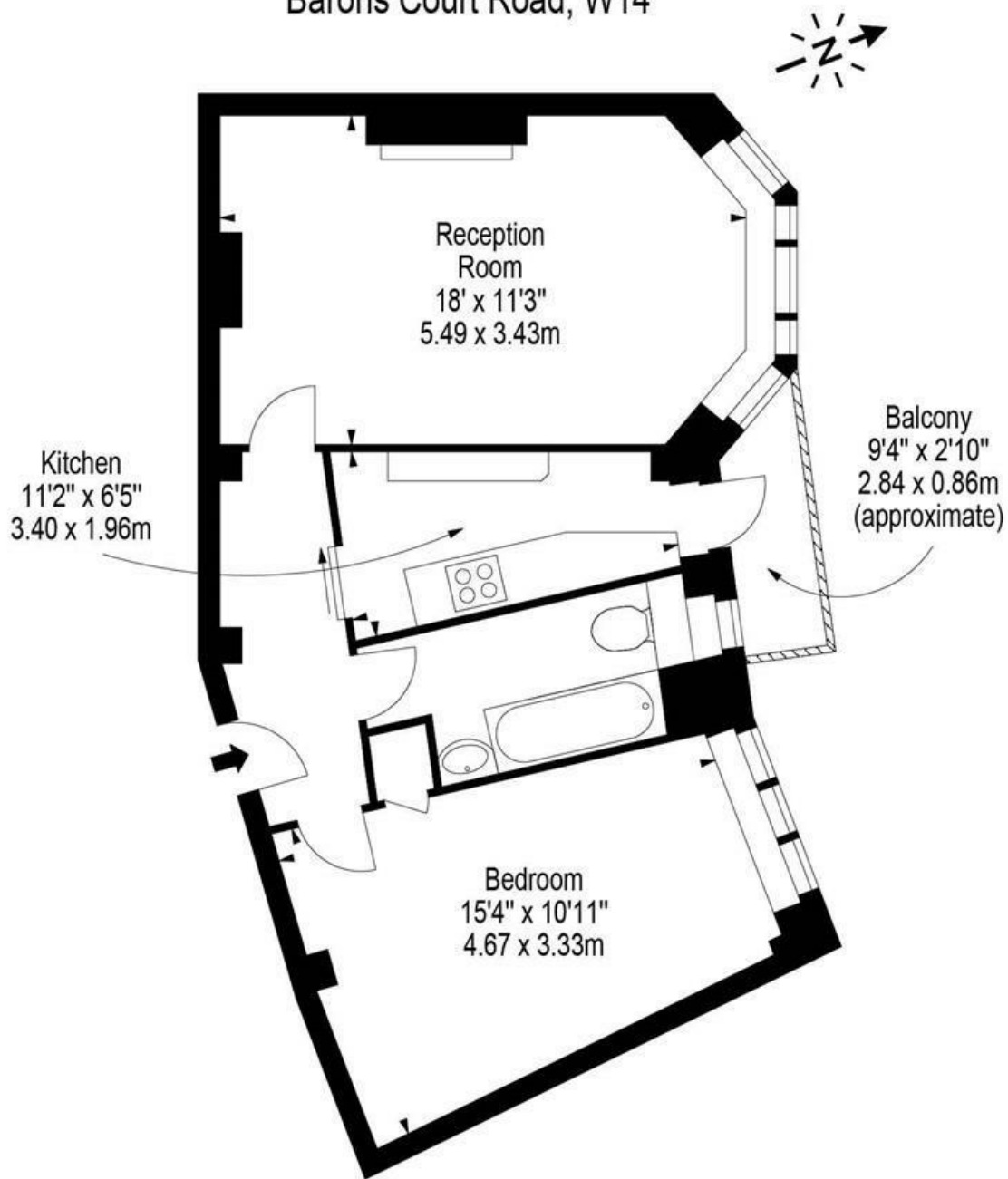


Barton Court, Barons Court Road, London W14 9EH

£1,400 Per month

- One bedroom flat
- Part furnished
- Heating & hot water included
- Near local amenities
- First floor
- Available mid April
- Close to Barons Court tube
- Energy Efficiency Rating Current Band: C

Barton Court,
Barons Court Road, W14



First Floor

Approx Gross Internal Area **528 Sq Ft - 49.05 Sq M**

Floor Plan Supplied For Identification Purposes Only And May Not Be Accurate
Floor Plan by www.elegantmediasolution.com

Whilst these particulars are believed to be correct, no guarantee can be given for the measurements, appliances or services. It is our recommendation that all are tested. These are not intended to form part of any contract. Tate's accept no responsibility for their accuracy.

Energy Efficiency Rating		
	Current	Potential
Very energy efficient - lower running costs		
(92 plus) A		
(81-91) B		
(69-80) C	77	77
(55-68) D		
(39-54) E		
(21-38) F		
(1-20) G		
Not energy efficient - higher running costs		
England & Wales		
EU Directive 2002/91/EC		

135 Hammersmith Rd London W14 0QL

T. 020 7602 6020 F. 020 7602 9522

mail@tatesestates.co.uk

tatesestates.co.uk

Tates (Agents) Ltd. Registered in England and Wales No. 2356337
Registered Office: 4th Floor Imperial House, 15 Kingsway London WC2B 6U

