



## Christian Fields, SW16

**£800,000**

Located on a popular treelined road, this lovely three double bedroom family home offers excellent space and natural light throughout. Benefiting from a rear extension the semi open-plan

- Semi-Detached House
- Three Bedrooms
- Quiet Residential Road
- Large Garden
- Garage
- Scope to Extend



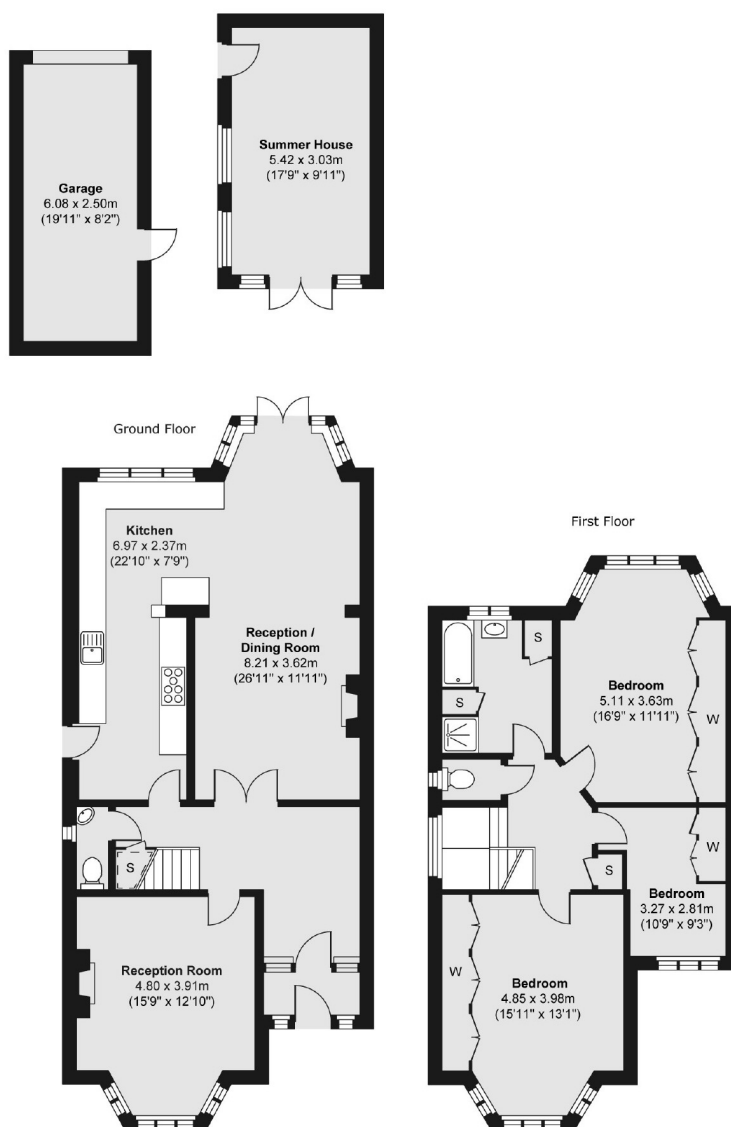


Christian Fields is ideally located close to Streatham High Road and the wide variety of bars, cafés and other local amenities it has to offer. Transport links are found at Streatham Common Station, Norbury and West Norwood train stations providing convenient links to the City. The wide green open spaces of Streatham Common, The Rookery and Norwood Grove are also close by.









Total area (approx.) 142.16 sq. m (1,530 sq. ft)  
Garage area (approx.) 15.20 sq. m (164 sq. ft)  
Summer House area (approx.) 16.42 sq. m (177 sq. ft)

Jacksons Earlsfield  
372-374 Garratt Lane  
Earlsfield  
London  
SW18 4ES  
020 8971 7979

Energy Rating: We aim to make our particulars both accurate and reliable. However they are not guaranteed; nor do they form part of an offer or contract. If you require clarification on any points then please contact us, especially if you're traveling some distance to view. Please note that appliances and heating systems have not been tested and therefore no warranties can be given as to their good working order.