



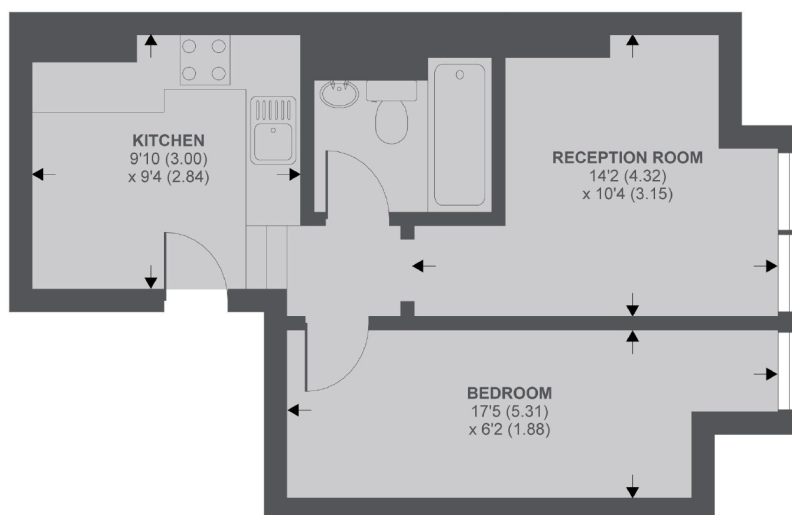
## Ritherdon Road, SW17

**£1,150 PCM**

A bright and stylish ground floor, one bedroom Victorian period conversion flat. This property would be perfect for a professional couple or single occupant.

- Ground Floor Flat
- One Bedroom
- Eat In Kitchen
- Communal Garden
- Close To Station
- Furnished

For further information on the costs associated with renting a property, please pop into our office or visit our website.



**Ground Floor**

APPROX FLOOR AREA 356 SQ.FT 33 SQ.M

Copyright nichecom.co.uk 2019 REF : 462764

Jacksons Balham  
8-11 Balham Station Road  
London  
SW12 9SG  
020 8675 6565  
[balham.lettings@jacksonsestateagents.com](mailto:balham.lettings@jacksonsestateagents.com)

Energy Rating: TBC We aim to make our particulars both accurate and reliable. However they are not guaranteed; nor do they form part of an offer or contract. If you require clarification on any points then please contact us, especially if you're traveling some distance to view. Please note that appliances and heating systems have not been tested and therefore no warranties can be given as to their good working order.