

for sale

offers over **£250,000** Freehold



Highfield Gardens, Highfield Road, Derby, DE22 1HT

A spacious three bedroom semi detached house in a popular cul de sac location off Duffield Road. The property comprises of an entrance hallway, downstairs wc, lounge, dining room, kitchen, an upstairs bathroom, three bedrooms, a driveway, double garage and a large garden.

Highfield Gardens, Highfield Road, Derby, DE22 1HT

Description

A spacious three bedroom semi detached house in a popular cul de sac location off Duffield Road with potential to extend subject to planning permission. The property benefits from having an entrance hallway, downstairs wc, lounge, dining room, kitchen, an upstairs bathroom, three bedrooms, a driveway creating plenty of off road parking, gardens to the side and rear and a detached double garage. Viewings are highly recommended.



Measurement

Lounge

15' 2" max x 9' 8" max (4.62m x 2.94m)

Dining Room

11' 5" max x 11' 4" max (3.48m x 3.45m)

Kitchen

10' 1" max x 8' 3" max (3.07m x 2.51m)

Bedroom 1

14' 10" max x 10' 2" max (4.52m x 3.10m)

Bedroom 2

13' 3" max x 8' 2" max (4.04m x 2.49m)

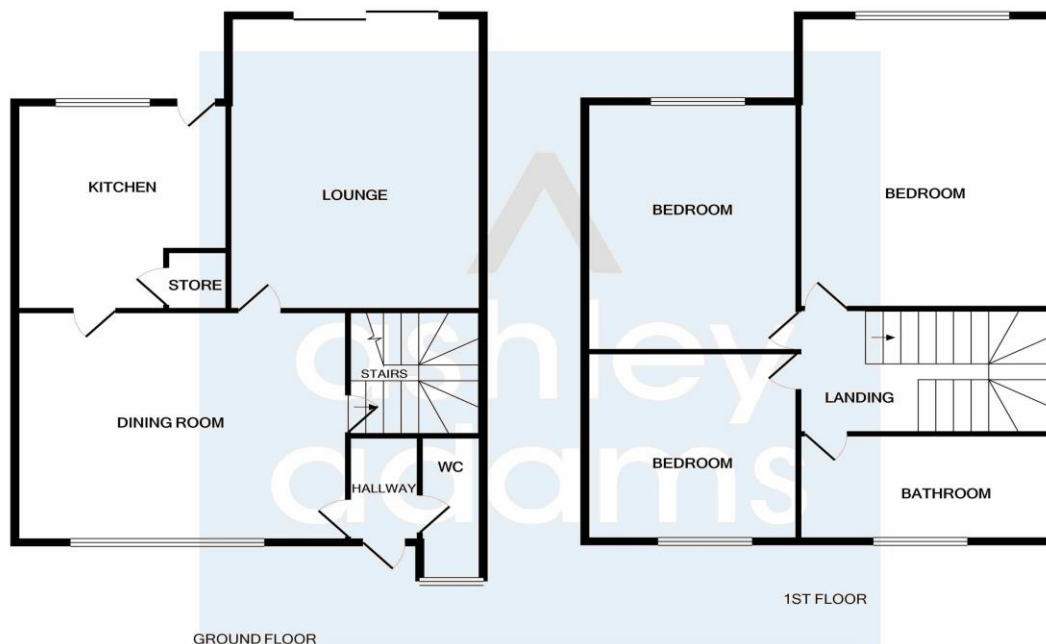
Bedroom 3

8' 2" max x 8' 1" max (2.49m x 2.46m)

Family Bathroom

10' 2" max x 5' 4" max (3.10m x 1.62m)





FOR ILLUSTRATIVE PURPOSES ONLY
Made with Metropix ©2020

To view this property please contact Ashley Adams on

T 01332 202040
E derbyinfo@ashleyadams.co.uk

37-38 Iron Gate
DERBY DE1 3GA

Tenure: Freehold

EPC Rating: D

Property Ref: DER204392 - 0002

view this property online ashleyadams.co.uk/Property/ref-DER204392



1. MONEY LAUNDERING REGULATIONS Intending purchasers will be asked to produce identification documentation at a later stage and we would ask for your co-operation in order that there will be no delay in agreeing the sale. 2. These particulars do not constitute part or all of an offer or contract. 3. The measurements indicated are supplied for guidance only and as such must be considered incorrect. Potential buyers are advised to recheck measurements before committing to any expense. 4. We have not tested any apparatus, equipment, fixtures, fittings or services and it is in the buyers interest to check the working condition of any appliances.

see all our properties at www.ashleyadams.co.uk | www.rightmove.co.uk | www.zoopla.co.uk