

FLETCHERS

ESTATE AGENTS



Chiswick High Road, W4

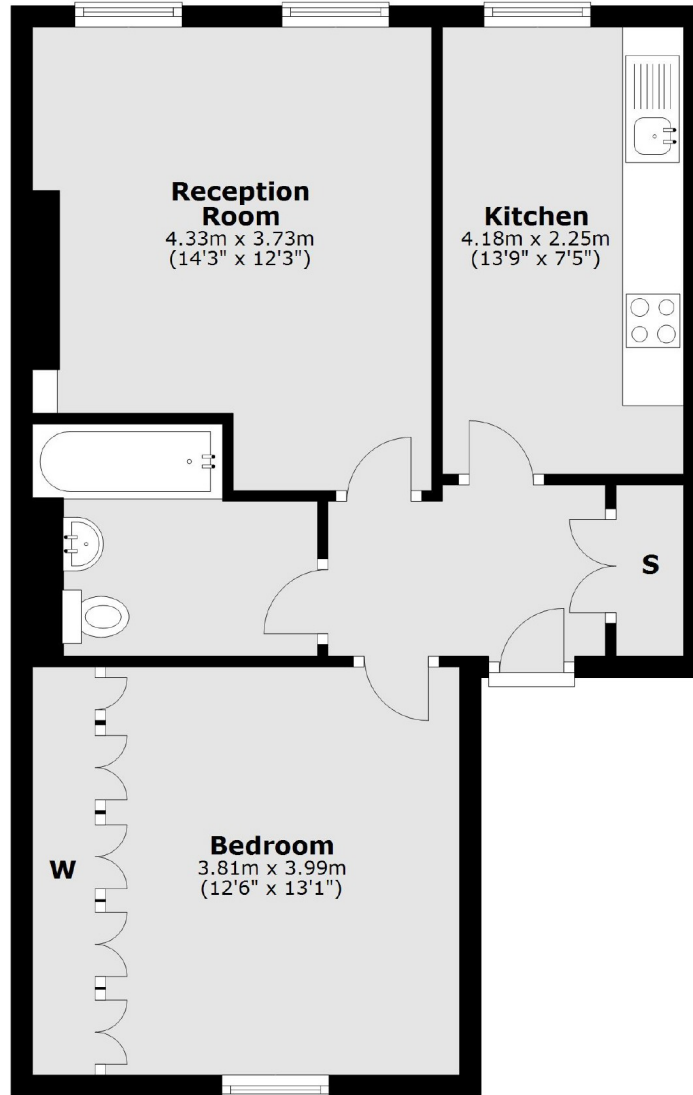
£399,950

This second floor period conversion offers spacious living with a separate eat-in kitchen and a large reception room. The property has a double bedroom with floor to ceiling wardrobes and a share of the freehold.

Situated close to Kew Bridge and the riverside, with Gunnersbury Underground station nearby. There are plenty of shops, cafés and restaurants as you walk further down Chiswick High Road.

- One Bedroom • Victorian Conversion • Second Floor • Eat-In Kitchen • Built-In Storage • Share Of Freehold •

Second Floor



Total area: approx. 51.4 sq. metres (553.1 sq. feet)

Fletchers Chiswick Turnham Green Sales
58 Turnham Green Terrace, London, W4 1QP
020 8987 3000
chiswicksales@fletcherestates.com

Energy Rating: . We aim to make our particulars both accurate and reliable. However they are not guaranteed; nor do they form part of an offer or contract. If you require clarification on any points then please contact us, especially if you're traveling some distance to view. Please note that appliances and heating systems have not been tested and therefore no warranties can be given as to their good working order.