



Sudbury Heights Avenue, UB6

£250,000

A well presented and modern one bedroom flat on the second floor with its own private balcony. Early viewings are highly recommended.



The flat has been finished to a very high standard with built in wardrobes in the bedroom, an open plan kitchen/reception room with sliding doors that open on to a private terrace and a modern bathroom. The property benefits from underfloor heating (included within the service charge), wooden flooring, double glazing and a communal roof terrace.

Please note that in order to purchase this property you must satisfy all of the following criteria:

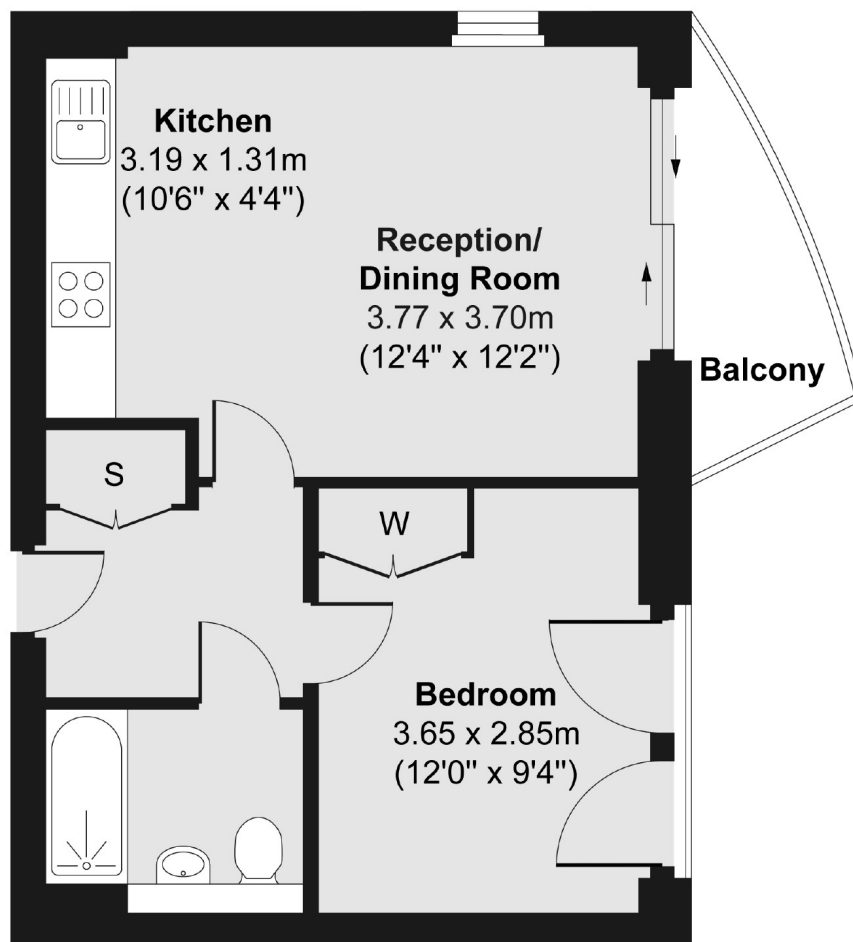
- You must be a first time buyer(s)
- The buyer(s) must live or work in the London
- The total combined income of the buyer(s) must be below £90,000 per annum

Located just off Whitton Avenue East, Bridgepoint House is ideally located for Sudbury Town underground station (Piccadilly line). There are numerous local amenities within walking distance.

- One Double Bedroom • Private Balcony • Gated Development •
 - Under Floor Heating • Modern • Communal Roof Terrace •
-



Second Floor



Total area (approx.) 38.33 sq. m (413 sq. ft)
Balcony area (approx.) 3.41 sq. m (37 sq. ft)

Robertson Smith & Kempson Ealing Sales
1 The Broadway, London,
W5 2NT
020 8840 7677
ealingsales@robertsonsmithandkempson.co.uk

Energy Rating: . We aim to make our particulars both accurate and reliable. However they are not guaranteed; nor do they form part of an offer or contract. If you require clarification on any points then please contact us, especially if you're traveling some distance to view. Please note that appliances and heating systems have not been tested and therefore no warranties can be given as to their good working order.